



Connells

Peninsula Quay Pegasus Way
GILLINGHAM



Property Description

This 2 bedroom apartment is a wonderful example of modern living. The home provides a view over Gillingham Pier from the dual balcony, a wonderful way to start your morning with a coffee in the summer. Internally the home is beautifully decorated throughout providing a home ready to move into and enjoy from day one. Another way this apartment really separates itself from the others within the development, is in the main bedroom there is not just an en-suite but a wardrobe area in addition to the bedroom. The block also has its own gym which access is included within the service charge. The area is highly conveniently positioned with very easy access to local shops and Chatham High Street as well as easy walk or drive to Gillingham station while bus routes are also nearby.



Entrance Hall

Lounge

21' 1" x 15' 11" (6.43m x 4.85m)

Balcony

Kitchen

10' 1" x 6' (3.07m x 1.83m)

Bedroom One

14' 1" x 9' 1" (4.29m x 2.77m)

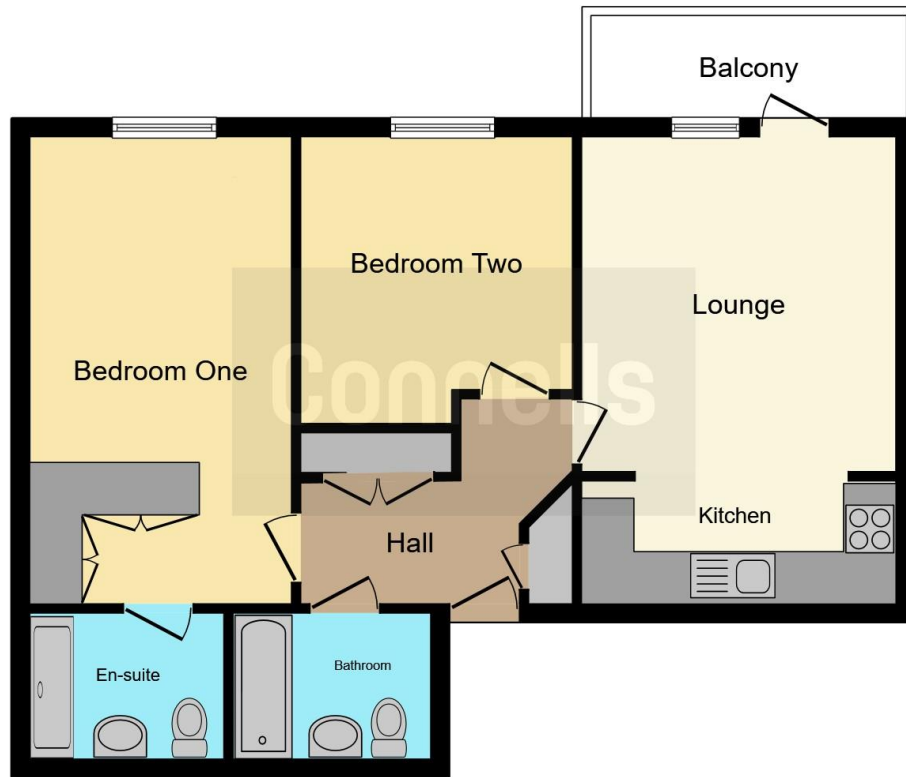
En Suite

Bedroom Two

11' 11" x 10' 9" (3.63m x 3.28m)

Bathroom





This floor plan is for illustrative purposes only. It is not drawn to scale. Any measurements, floor areas (including any total floor area), openings and orientation are approximate. No details are guaranteed, they cannot be relied upon for any purpose and they do not form part of any agreement. No liability is taken for any error, omission or misstatement. A party must rely upon its own inspection(s). Powered by www.focalagent.com

To view this property please contact Connells on

T 01634 233400
E rainham@connells.co.uk

21 High Street RAINHAM
 GILLINGHAM ME8 7HX

EPC Rating: B

view this property online connells.co.uk/Property/RAL102892

This is a Leasehold property with details as follows; Term of Lease 999 years from 01 Jan 2008. Should you require further information please contact the branch. Please Note additional fees could be incurred for items such as Leasehold packs.



Tenure: Leasehold



1. MONEY LAUNDERING REGULATIONS Intending purchasers will be asked to produce identification documentation at a later stage and we would ask for your co-operation in order that there will be no delay in agreeing the sale. 2. These particulars do not constitute part or all of an offer or contract. 3. The measurements indicated are supplied for guidance only and as such must be considered incorrect. Potential buyers are advised to recheck measurements before committing to any expense. 4. We have not tested any apparatus, equipment, fixtures, fittings or services and it is in the buyers interest to check the working condition of any appliances.

Connells Residential is registered in England and Wales under company number 1489613, Registered Office is Cumbria House, 16-20 Hockliffe Street, Leighton Buzzard, Bedfordshire, LU7 1GN. VAT Registration Number is 500 2481 05.

See all our properties at www.connells.co.uk | www.rightmove.co.uk | www.zoopla.co.uk

Property Ref: RAL102892 - 0004