



Connells

Waverley Close
Lordswood Chatham

Waverley Close Lordswood Chatham ME5 8UQ

For Sale Offers Over
£270,000



Property Description

This newly refurbished end of terrace home is ready to move into with minimal work needed for the next buyer! This home has an open plan living area, two double bedrooms and a newly fitted bathroom.

This home has a fantastic, south eastern facing, rear garden with a newly built outhouse which would be ideal for a home office, a playroom or a cinema room. In addition to the double garage this house comes with two designated parking spaces. What you can do with this space is up to you, from a home gym to a classic car work shop!



Entrance Hall

Lounge/ Diner

17' x 11' 10" (5.18m x 3.61m)

Kitchen

9' 1" x 5' 1" (2.77m x 1.55m)

Landing

Bedroom One

11' 10" x 8' 11" (3.61m x 2.72m)

Bedroom Two

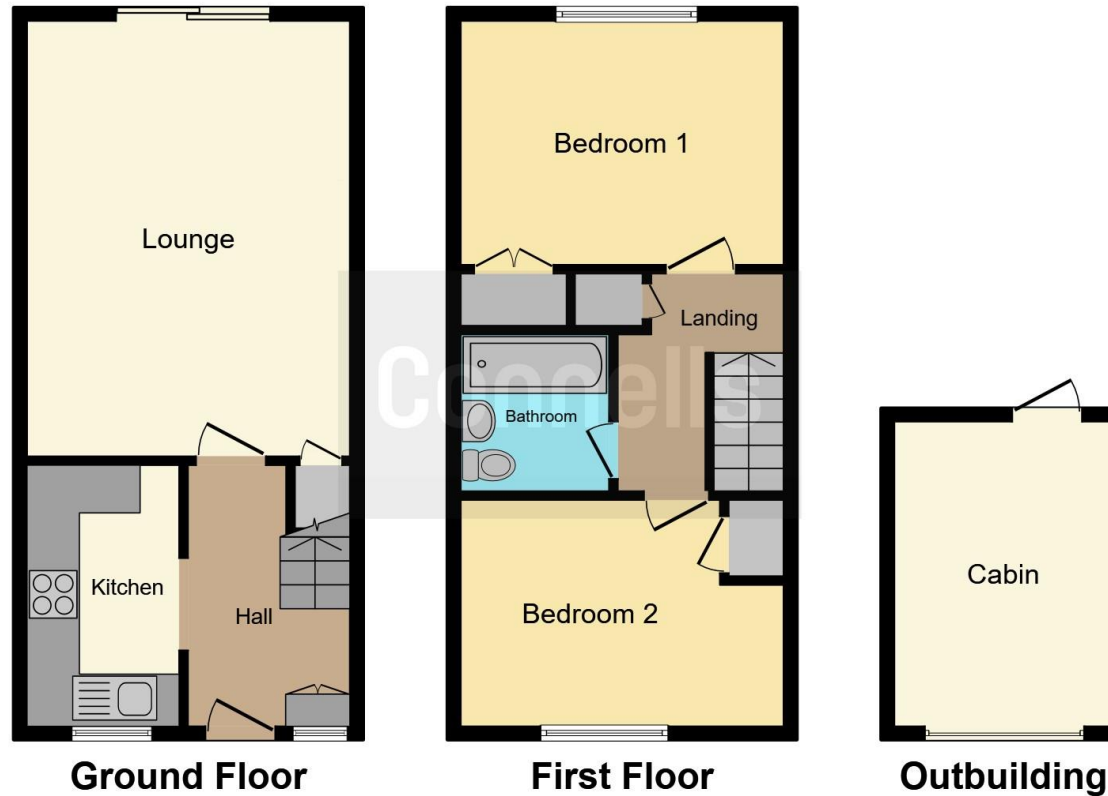
11' 11" x 8' 1" (3.63m x 2.46m)

Bathroom









This floor plan is for illustrative purposes only. It is not drawn to scale. Any measurements, floor areas (including any total floor area), openings and orientation are approximate. No details are guaranteed, they cannot be relied upon for any purpose and they do not form part of any agreement. No liability is taken for any error, omission or misstatement. A party must rely upon its own inspection(s). Powered by www.focalagent.com

To view this property please contact Connells on

T 01634 233400
E rainham@connells.co.uk

21 High Street RAINHAM
 GILLINGHAM ME8 7HX

EPC Rating: D

Tenure: Freehold

view this property online connells.co.uk/Property/RAL102851



1. MONEY LAUNDERING REGULATIONS Intending purchasers will be asked to produce identification documentation at a later stage and we would ask for your co-operation in order that there will be no delay in agreeing the sale. 2. These particulars do not constitute part or all of an offer or contract. 3. The measurements indicated are supplied for guidance only and as such must be considered incorrect. Potential buyers are advised to recheck measurements before committing to any expense. 4. We have not tested any apparatus, equipment, fixtures, fittings or services and it is in the buyers interest to check the working condition of any appliances.

Connells Residential is registered in England and Wales under company number 1489613, Registered Office is Cumbria House, 16-20 Hockliffe Street, Leighton Buzzard, Bedfordshire, LU7 1GN. VAT Registration Number is 500 2481 05.

See all our properties at www.connells.co.uk | www.rightmove.co.uk | www.zoopla.co.uk

Property Ref: RAL102851 - 0006