

Deacon House, Sutton, SM2

**BELVOIR!**

Guide Price £135,000

Tenure: Leasehold



### Key Features

- > Beautifully Presented 1-Bed G/F Retirement Apartment
- > Pride of Ownership Evident
- > 24-hr Careline System
- > Great Tranquil Location with Proximity to Local Amenities
- > Well-Maintained Landscaped Gardens
- > Secure Entry System & Gated Under Cover Parking



**EPC Rating C**  
**Council Tax Band C**



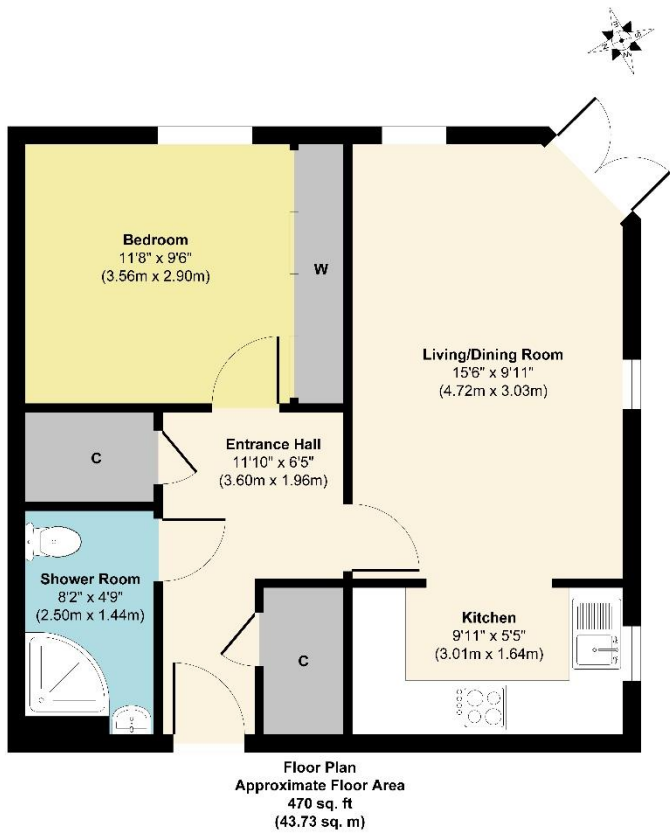
Welcome to your new home!

Nestled in this wonderful area of Belmont, SM2, is Deacon House, a 60s+ retirement community featuring immaculately and beautifully presented 1 bed ground floor apartment with well-maintained communal facilities: tranquil landscaped gardens with seating areas, guest suite for visitors, delightful lounge for social activities and events, residents' and visitors' parking, resident / visiting manager available for help, advice and co-ordination of services provided, lifts, laundry room and 24-Hour Careline system for safety and security.

As you enter the apartment, you are greeted by a vibrant floral display in the hallway, where you benefit from ample storage cupboards. The living room is bright and spacious, adorned with a variety of beautiful plants that add a sense of tranquillity and natural beauty to the room - the perfect space for entertaining guests or relaxing with a good book. The walls of the property are painted in calming neutral tones, providing the ideal backdrop for the vibrant hues of the plants. Enjoy a modern fitted kitchen with integrated appliances and good cabinetry space. The bedroom offers plenty of room for a double bed and other furnishings and is fitted with built-in wardrobes. The bathroom features a modern white suite with a walk-in shower.

The property offers a warm community spirit and has excellent access to local amenities including shops, restaurants, cinema etc. With easy access to public transport, you can easily explore the surrounding area and enjoy all that Belmont has to offer and beyond.

Don't miss out on the opportunity to make this beautiful retirement apartment your new home! Call today to arrange a viewing and discover everything it has to offer.



Approx. Gross Internal Floor Area 470 sq. ft / 43.73 sq. m  
Illustration for identification purposes only. Measurements are approximate, not to scale.  
Produced by Elements Property

