

for sale

offers over **£640,000**



Grassmere Leybourne West Malling ME19 5QP

Set in a popular Leybourne location this detached family home has plenty to offer! Having been re-modeled integrally this property has been transformed into a very social space - the open plan kitchen / dining area opens directly into the rear garden perfect for those summers day BBQs! Call us now!



Grassmere Leybourne West Malling ME19 5QP

Entrance Hall

W.C

Open Plan Living Area

26' 6" Max x 25' 4" Max (8.08m Max x 7.72m Max)

Family Room

13' 4" x 8' 10" (4.06m x 2.69m)

Landing

Bedroom One

15' 3" x 11' 8" (4.65m x 3.56m)

En-Suite

Bedroom Two

13' 6" Max x 12' Max (4.11m Max x 3.66m Max)

Bedroom Three

10' 11" Max x 11' 9" Max (3.33m Max x 3.58m Max)



Bedroom Four

8' 11" x 7' 11" (2.72m x 2.41m)

Bathroom

Outside

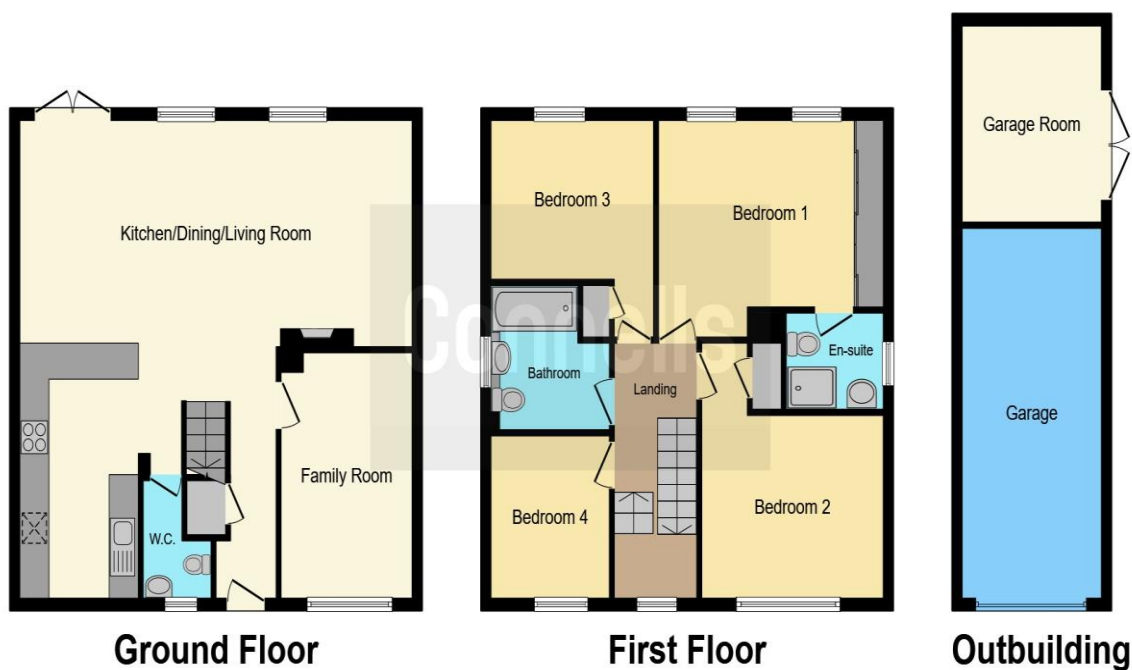
Rear Garden

Garage

Garage Room

8' 8" x 10' 7" (2.64m x 3.23m)





This floor plan is for illustrative purposes only. It is not drawn to scale. Any measurements, floor areas (including any total floor area), openings and orientation are approximate. No details are guaranteed, they cannot be relied upon for any purpose and they do not form part of any agreement. No liability is taken for any error, omission or misstatement. A party must rely upon its own inspection(s). Powered by www.focalagent.com

To view this property please contact Connells on

T 01732 874990
E westmallings@connells.co.uk

11 Swan Street
 WEST MALLING ME19 6JU

Property Ref: WML102355 - 0005

Tenure: Freehold

EPC Rating: Awaited

view this property online connells.co.uk/Property/WML102355



1. MONEY LAUNDERING REGULATIONS Intending purchasers will be asked to produce identification documentation at a later stage and we would ask for your co-operation in order that there will be no delay in agreeing the sale. 2. These particulars do not constitute part or all of an offer or contract. 3. The measurements indicated are supplied for guidance only and as such must be considered incorrect. Potential buyers are advised to recheck measurements before committing to any expense. 4. We have not tested any apparatus, equipment, fixtures, fittings or services and it is in the buyers interest to check the working condition of any appliances.

Connells Residential is registered in England and Wales under company number 1489613, Registered Office is Cumbria House, 16-20 Hockliffe Street, Leighton Buzzard, Bedfordshire, LU7 1GN. VAT Registration Number is 500 2481 05.

see all our properties at www.connells.co.uk | www.rightmove.co.uk | www.zoopla.co.uk