

for sale

£600,000



Upper Mill Watringbury Maidstone ME18 5PD

This stunning architect designed property is located in a highly sought after Watringbury location and needs to be viewed to appreciate just what is being offered! This property has Scandinavian inspiration and is very much designed with open flowing space in mind!



Upper Mill Wateringbury Maidstone ME18 5PD

Entrance Hall

Kitchen

11' 6" x 22' 4" (3.51m x 6.81m)

Lounge

14' 10" x 23' 8" (4.52m x 7.21m)

Dining Room

14' 11" x 8' 9" (4.55m x 2.67m)

Bathroom

Bedroom Two

11' 1" x 17' 2" (3.38m x 5.23m)

Bedroom Four

9' 4" x 8' 1" (2.84m x 2.46m)

Bedroom Three

14' 1" x 9' 4" (4.29m x 2.84m)

Lower Ground Floor

W.C

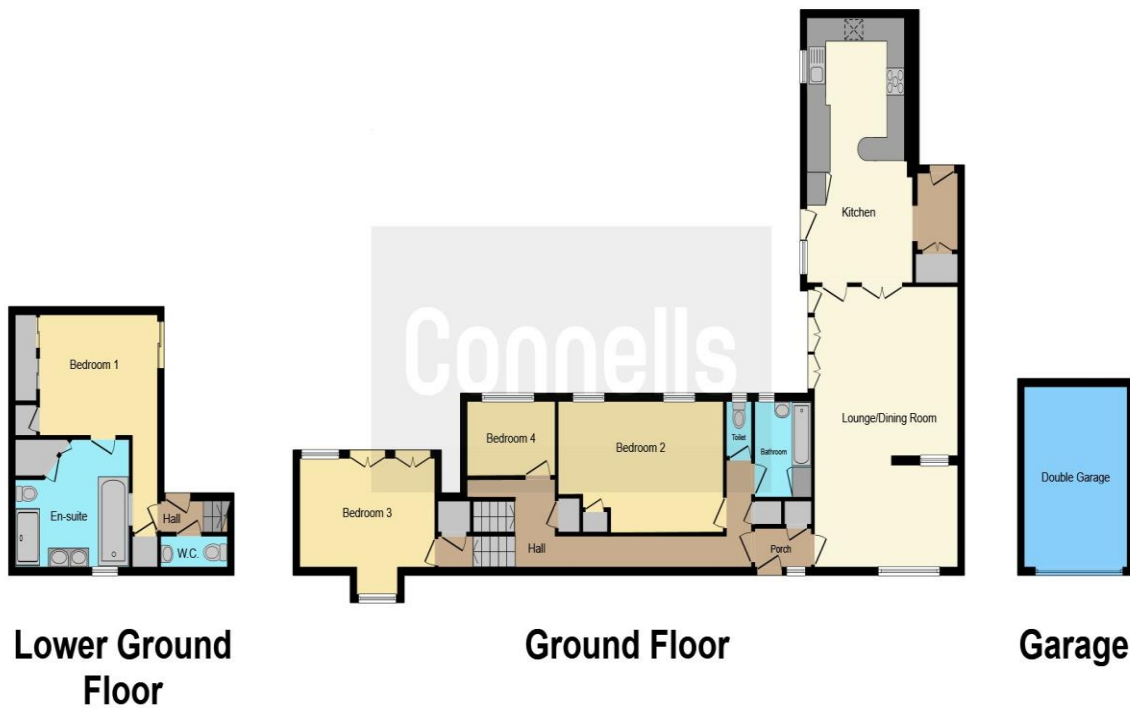


Bedroom One

13' 1" x 13' 9" (3.99m x 4.19m)

En-Suite





This floor plan is for illustrative purposes only. It is not drawn to scale. Any measurements, floor areas (including any total floor area), openings and orientation are approximate. No details are guaranteed, they cannot be relied upon for any purpose and they do not form part of any agreement. No liability is taken for any error, omission or misstatement. A party must rely upon its own inspection(s). Powered by www.focalagent.com

To view this property please contact Connells on

T 01732 874990
E westmallings@connells.co.uk

11 Swan Street
 WEST MALLING ME19 6JU

Property Ref: WML102331 - 0003

Tenure: Freehold

EPC Rating: C

view this property online connells.co.uk/Property/WML102331



1. MONEY LAUNDERING REGULATIONS Intending purchasers will be asked to produce identification documentation at a later stage and we would ask for your co-operation in order that there will be no delay in agreeing the sale. 2. These particulars do not constitute part or all of an offer or contract. 3. The measurements indicated are supplied for guidance only and as such must be considered incorrect. Potential buyers are advised to recheck measurements before committing to any expense. 4. We have not tested any apparatus, equipment, fixtures, fittings or services and it is in the buyers interest to check the working condition of any appliances.

Connells Residential is registered in England and Wales under company number 1489613, Registered Office is Cumbria House, 16-20 Hockliffe Street, Leighton Buzzard, Bedfordshire, LU7 1GN. VAT Registration Number is 500 2481 05.

see all our properties at www.connells.co.uk | www.rightmove.co.uk | www.zoopla.co.uk