



Cromwell House, Walton Road, East Molesey, KT8 0DH

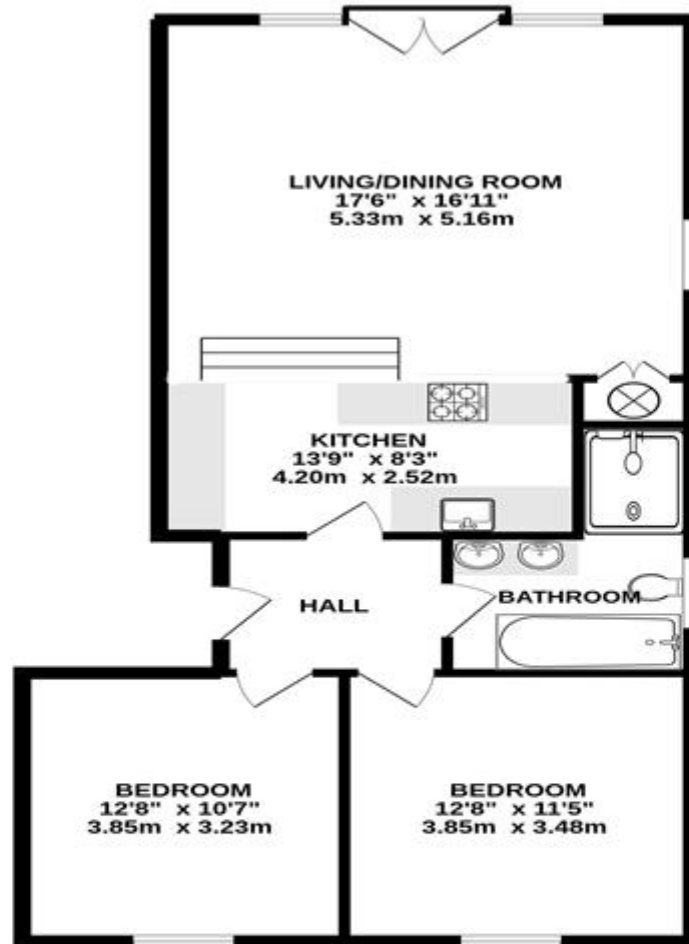
We are pleased to offer for sale, within Cromwell House, a high specification new build top floor two bedroom apartment. Cromwell House is a small development of five apartments within East Molesey.

£479,950

Cromwell House, Walton Road, East Molesey, KT8 0DH







SECOND FLOOR FLAT

Whilst every attempt has been made to ensure the accuracy of this floor plan, measurement of doors, windows, rooms and any other items are approximate and no responsibility is taken for any error, omission or mis-statement. Made with Metropix © 2022.

WALTON ROAD, EAST MOLESEY
INTERNAL FLOOR AREA (APPROX.)
815 sq ft/ 75.72 sq m