



## Algernon Road, SE13

£595,000

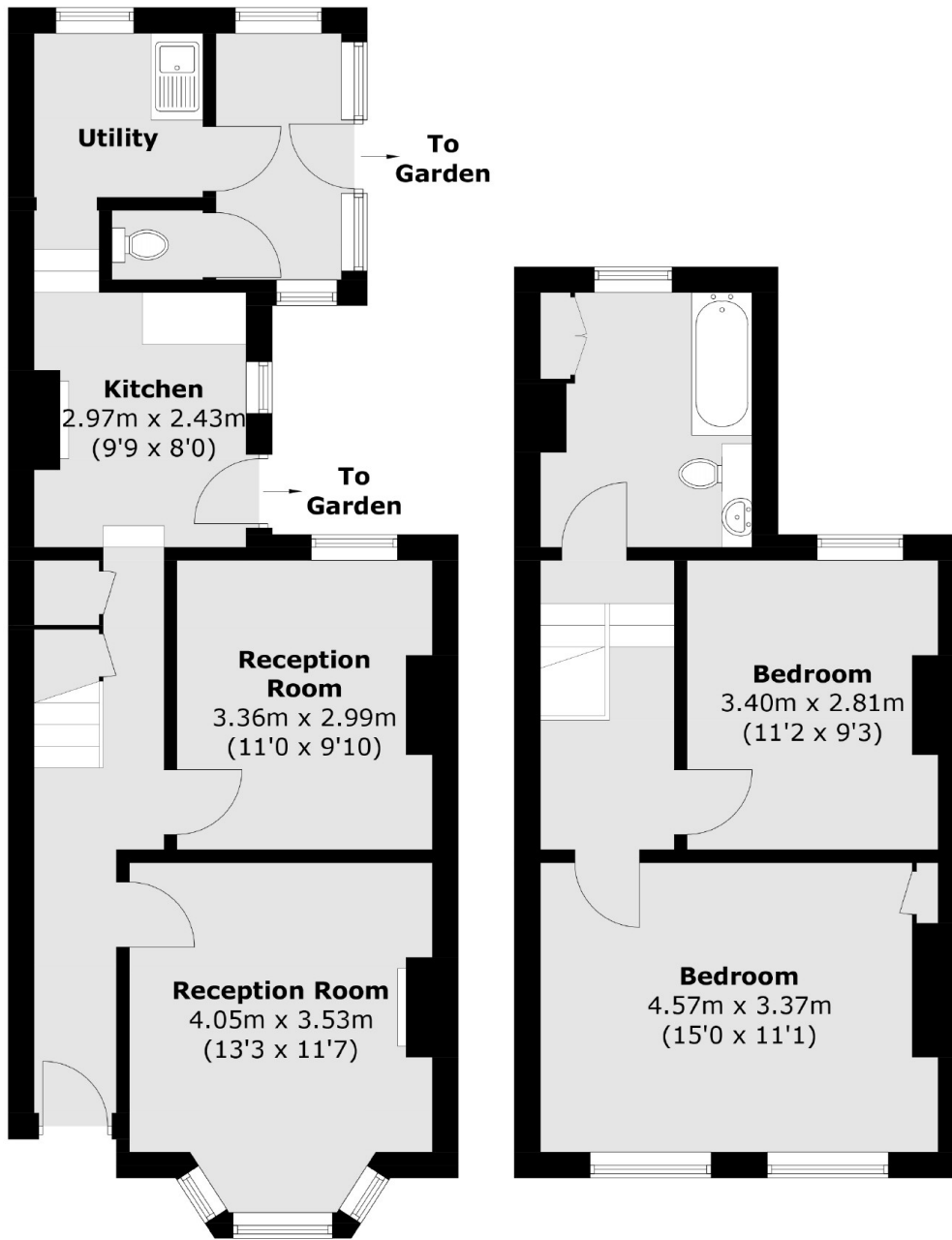
A two double bedroom end of terrace Victorian house offered to the market with no onward chain. This home is just over 966 sq ft, in need of modernising and offers potential to extend on the ground floor and convert the loft space subject to the usual consents.

Algernon Road is a lovely residential road located just around the corner from Hilly Fields and between St. John's, Lewisham and Ladywell train stations giving excellent transport links into London.

### Features

- Two Bedrooms
- Freehold
- Chain Free
- End Of Terrace
- Large Garden
- Potential To Extend STPP

# Algernon Road, London, SE13



**Ground Floor**

**First Floor**

Total area (approx.): 89.8 sq. m (966.6 sq. ft)