



Chudleigh Road, SE4

£850,000

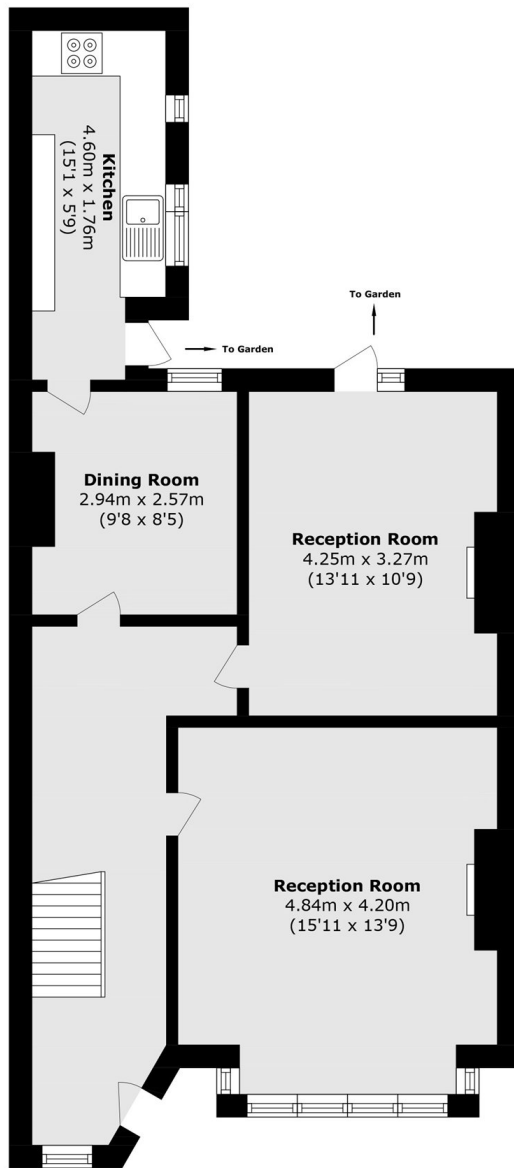
A charming and tastefully presented three bedroom, two reception room period house with a well landscaped rear garden. The property offers light throughout and is favourably positioned moments from Ladywell Village.

Chudleigh Road is a desirable road only a few minutes walk to Ladywell station and the vibrant range of local shops, cafés, restaurants in the village with the green spaces of Ladywell Fields and Hilly Fields nearby.

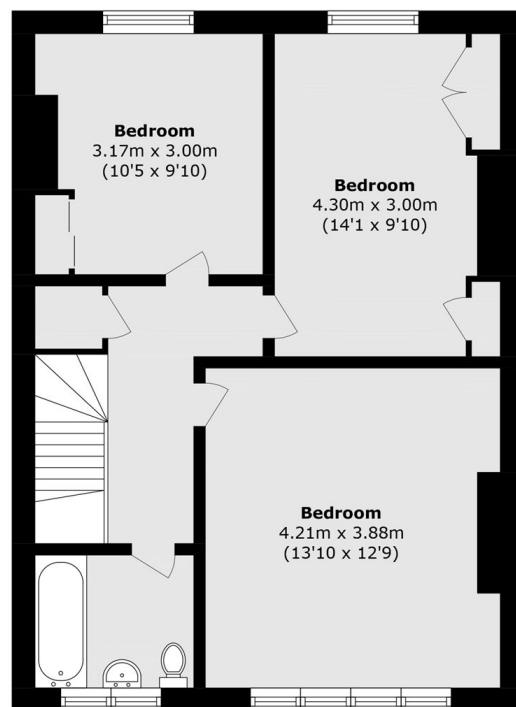
Features

- Three Bedrooms
- Two Reception Rooms
- Freehold House
- Beautifully Presented
- Well Landscaped Garden
- Close To Transport

Chudleigh Road, London, SE4



Ground Floor



First Floor

Total area (approx.): 116.7 sq. m (1256.1 sq. ft)