



## Brockley Grove, SE4

### £775,000

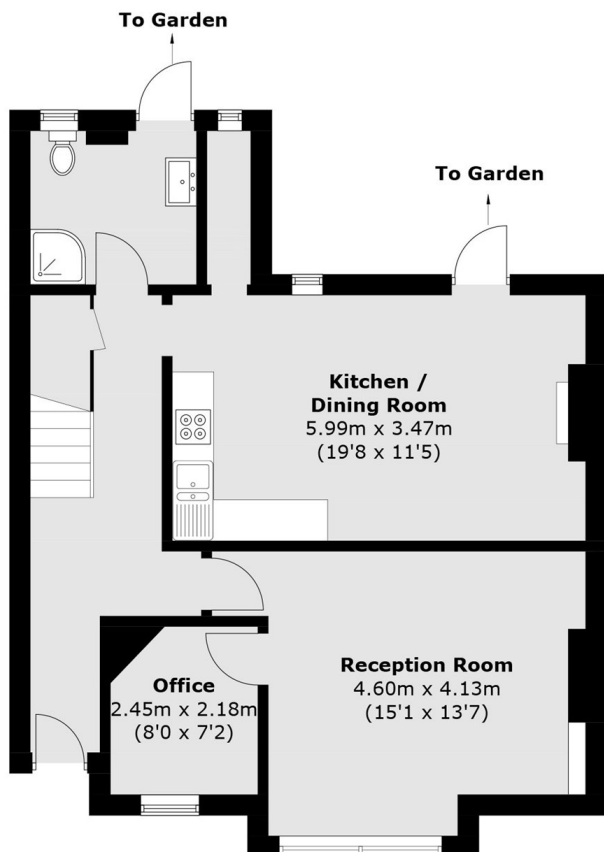
With generous proportions throughout this four bedroom period terrace measures over 1433 sq ft. There is a large bay fronted reception room, a broad kitchen with space to dine leading to a low maintenance rear garden. A perfect opportunity to create a beautiful family home and offered with no onward chain.

Brockley Grove is perfectly positioned for Crofton Park and Ladywell stations, the open spaces of Hilly Fields and the ever popular Gordonbrock Primary School. The independent cafés, restaurants and bars of Ladywell, Crofton Park and Brockley are all within easy reach.

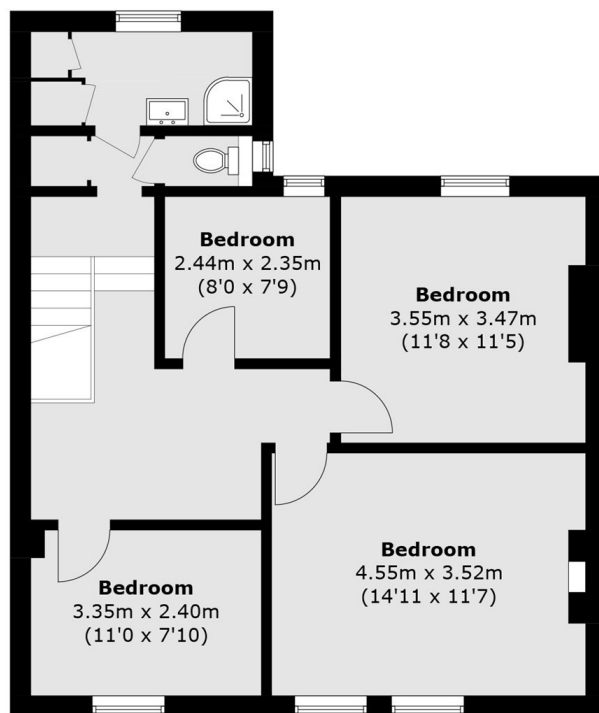
### Features

- Well Presented
- Four Bedrooms
- Two Bathrooms
- Large Kitchen/Diner
- Close To Stations
- No Onward Chain

# Brockley Grove, London, SE4



**Ground Floor**



**First Floor**

Total area (approx.): 133.2 sq. m (1,433.7 sq. ft)