



## Ermine Road, SE13

### £775,000

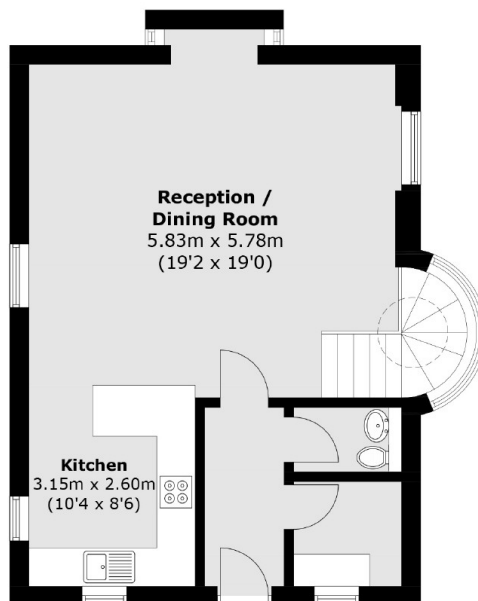
A detached modern house set behind electric gates and arranged over two floors. There is a generous light-filled kitchen/reception, two double bedrooms and a versatile third offering the perfect blend of comfort and style. The home offers a spacious layout and a low maintenance wraparound garden.

Ermine road is a lovely residential road located just around the corner from Hilly Fields and between St Johns, Lewisham and Ladywell train stations giving excellent transport links London and the City.

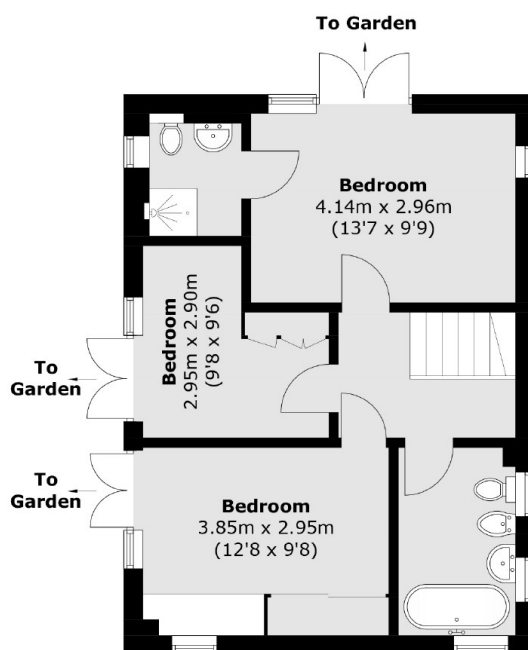
### Features

- Three Bedrooms
- Large/Kitchen Reception
- Solar Panels
- Low Maintenance Garden
- Off Street Parking
- Close To Transport

# Ermine Road, London, SE13



**Ground Floor**



**Basement**

Total area (approx.): 98.6 sq. m (1,061.3 sq. ft)  
(Including Basement Level)