



Adelaide Avenue, SE4

£450,000

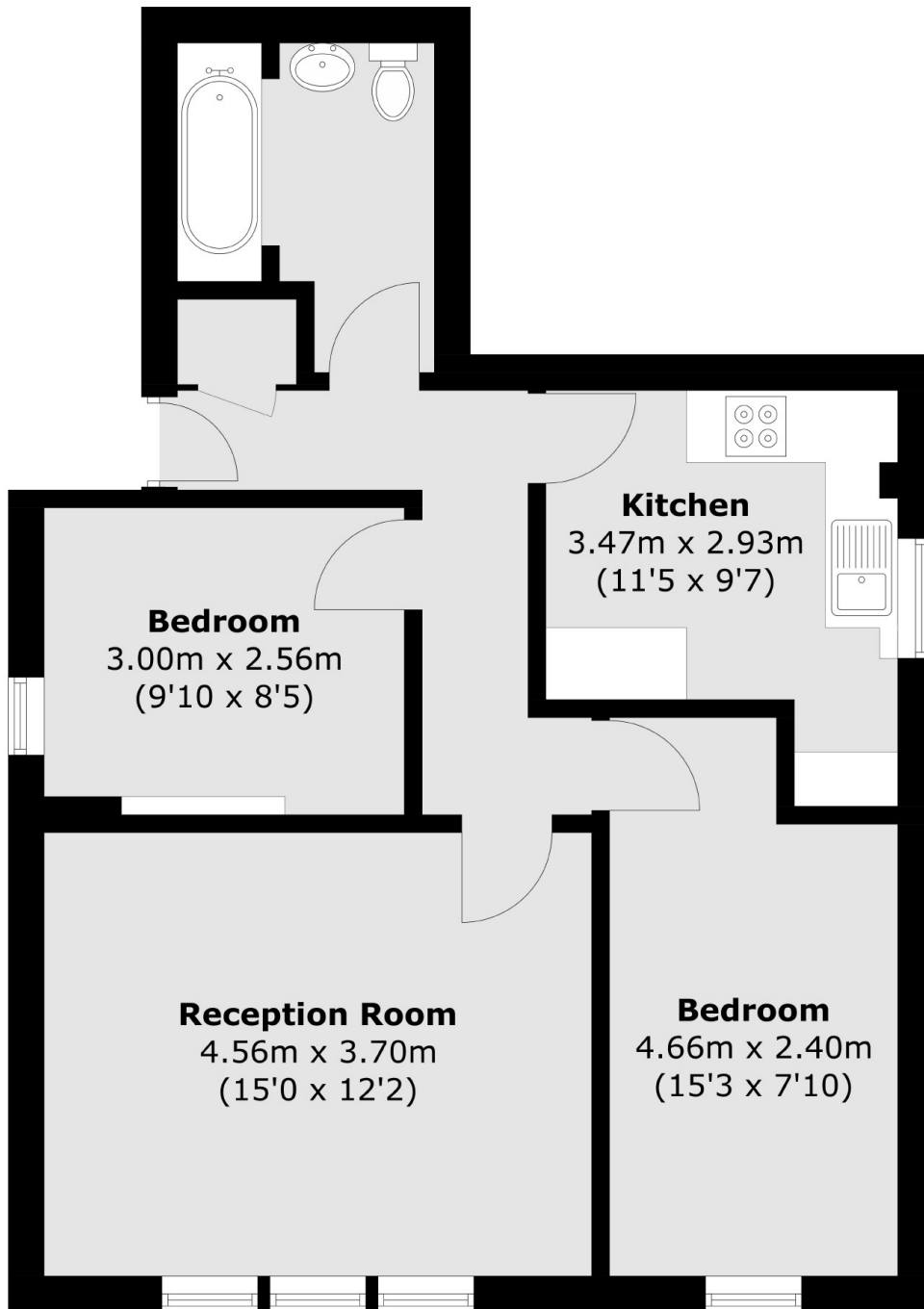
A well presented first floor flat in this beautiful period building comprising two double bedrooms, a separate eat-in kitchen, good size reception, modern bathroom and a communal garden.

Sought after location overlooking Hilly Fields and convenient for local shops, transport, Ladywell BR, Crofton Pk BR, St John's BR, Brockley BR and links to Central London.

Features

- First Floor Flat
- Two Double Bedrooms
- Eat-In Kitchen
- Communal Garden
- Period Building
- Brockley Conservation Area

Adelaide Avenue, London, SE4



Total area (approx.): 57.8 sq. m (622.1 sq. ft)

Dexters

Brockley
369 Brockley Road
London
SE4 2AG
Sales
020 8815 2220

Energy Rating: C. We aim to make our particulars both accurate and reliable. However they are not guaranteed; nor do they form part of an offer or contract. If you require clarification on any points then please contact us, especially if you're traveling some distance to view. Please note that appliances and heating systems have not been tested and therefore no warranties can be given as to their good working order.

 **RICS** | Regulated
Estate Agent
and Letting Agent

[dexters.co.uk](https://www.dexters.co.uk)