



## Ellerdale Street, SE13

£725,000

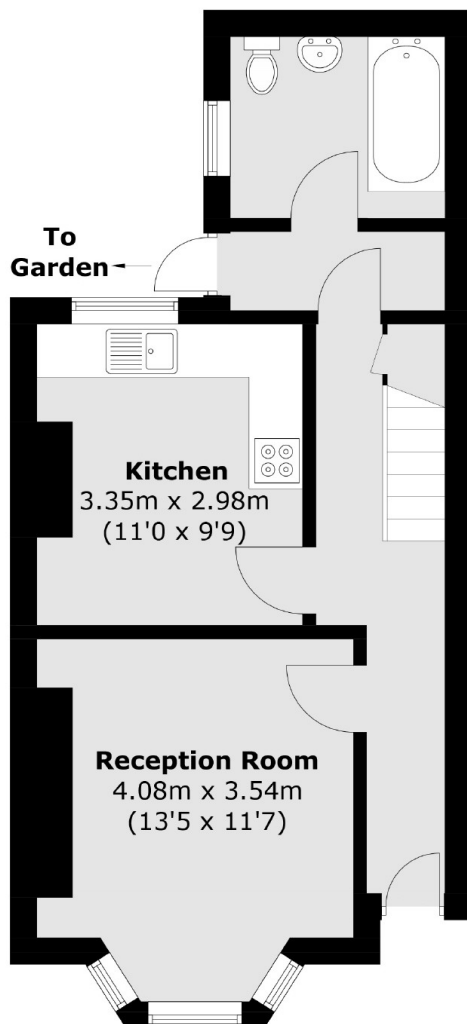
A well presented three double bedroom Victorian house offering a bay fronted reception room and a generous private rear garden. The property further benefits from potential to extend to the rear and into the loft STPP.

Ellerdale Street is a lovely residential road located just around the corner from Hilly Fields and between St. John's, Lewisham and Ladywell train stations giving excellent transport links into London.

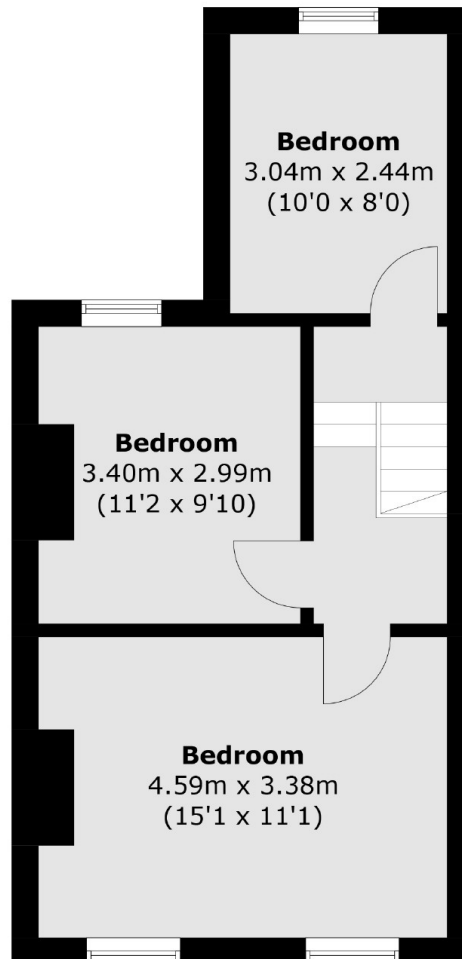
### Features

- Freehold
- Victorian
- Three Bedrooms
- Private Garden
- Potential To Extend STPP
- Chain Free

# Ellerdale Street, London, SE13



**Ground Floor**



**First Floor**

Total area (approx.): 79.9 sq. m (860.0 sq. ft)