



## Brookbank Road, SE13

### £750,000

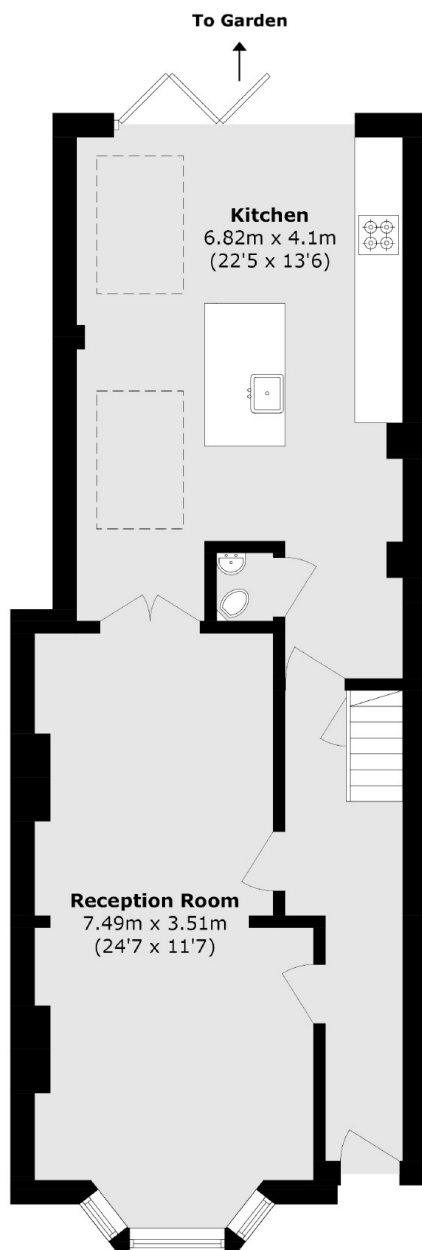
A charming two bedroom Victorian terraced house with a large ground floor extension favourably nestled moments from Hilly Fields and Ladywell Village.

Brookbank Road is a lovely residential road located just around the corner from Hilly Fields and between St. John's, Lewisham and Ladywell train stations giving excellent transport links.

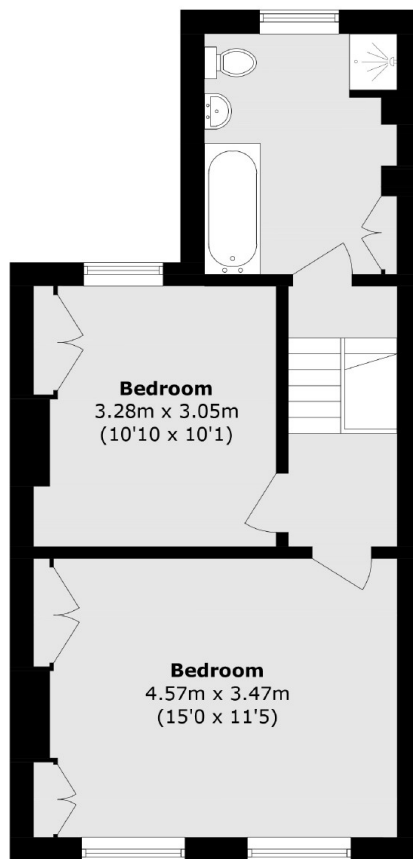
### Features

- Two Bedrooms
- Ground Floor Extension
- Freehold
- Fantastic Condition
- Victorian
- Potential To Extend STPP

# Brookbank Road, London, SE13



**Ground Floor**



**First Floor**

Total area (approx.): 97.7 sq. m (1051.5 sq. ft)