



Saxton Close, SE13

£700,000

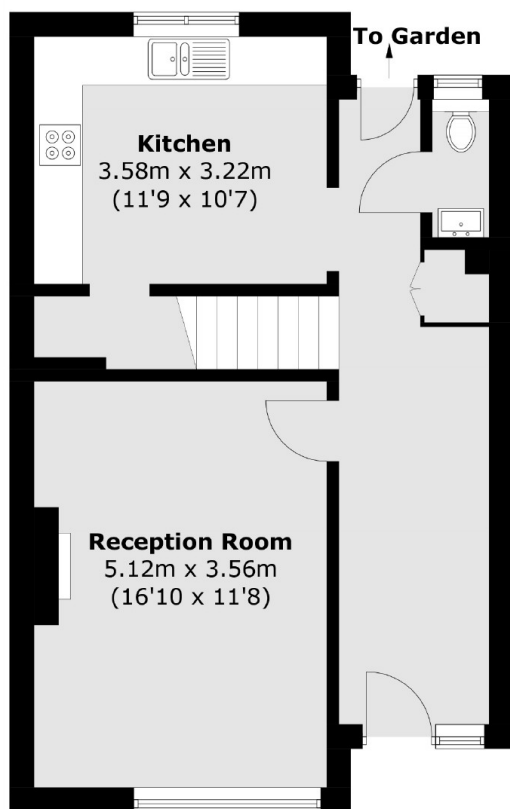
A generous four double bedroom house with a large east facing garden favourably positioned in a private close between Blackheath Village and Lewisham.

Saxton Close offers convenient access to both Blackheath Village and the ever changing Lewisham town centre. Blackheath Village provides an array of independent shops, bars, restaurants and Blackheath mainline station and the large expanse of Blackheath Common. Lewisham Station offers regular services into Canary Wharf, Bank, London Bridge, Charing Cross and London Victoria.

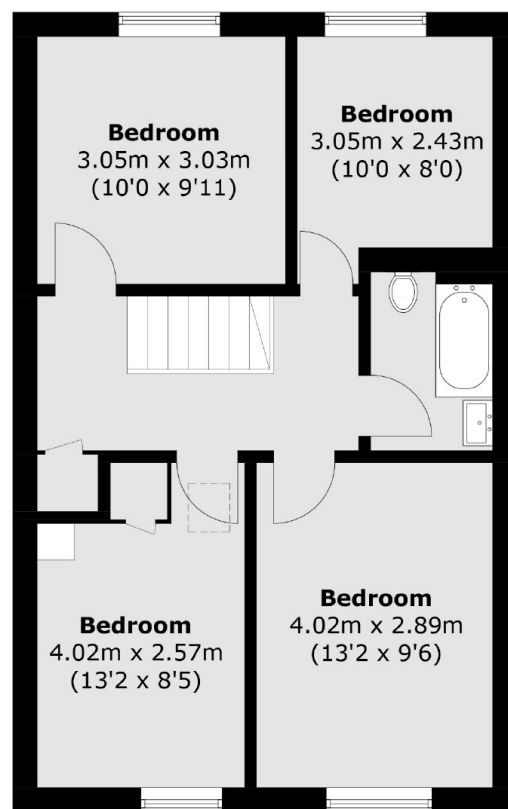
Features

- Freehold
- Well Presented
- Four Bedrooms
- Private Close
- Close To Transport
- Large Garden

Saxton Close, London, SE13



Ground Floor



First Floor

Total area (approx.): 100.7 sq. m (1,083.9 sq. ft)