



The Woodlands, SE13

£950,000

Dexters



The Woodlands, SE13

A characterful late 1960's family home favourably positioned moments from Mountsfield Park. This wonderful, four bedroom semi-detached property provides ample living space, a spacious rear garden, off-street parking plus garage and charm in abundance.

You enter the house through a welcoming hallway. There is a spacious modern fitted open plan kitchen reception room with doors leading to the large rear garden, a versatile use downstairs bedroom, separate W/C and a bathroom makes up the rest of the ground floor. Upstairs, there are three double bedrooms with the principal offering an en-suite shower room. Outside, the rear garden is impressive in it's expanse, has additional side access and provides a sense of privacy. There is also off street parking and a garage.

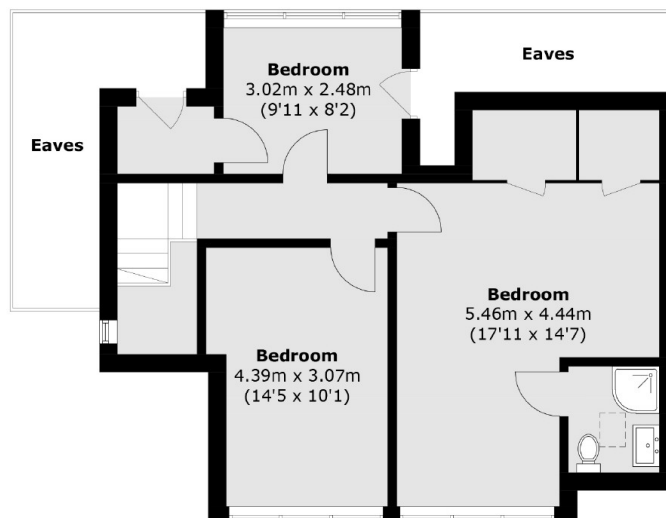
The Woodlands is a quiet residential road well located for Hither Green station with frequent services into London and the City.

Features

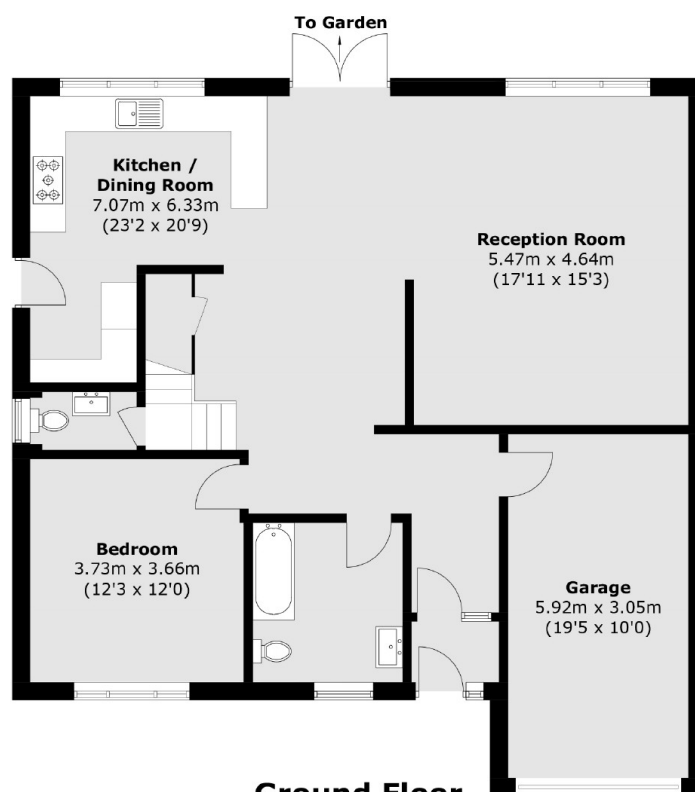
- Four Bedrooms
- Two Bathrooms
- Parquet Flooring
- Large Rear Garden
- Garage
- 1,867 Sqft



The Woodlands, London, SE13



First Floor



Ground Floor

Total area (approx.): 174.5 sq. m (1,878.3 sq. ft)
(Including Garage / Excluding Eaves)