



Harefield Road, SE4

£1,850,000

Dexters



Harefield Road, SE4

Set back from the road and offering over 2,600 sq. Ft of living space arranged over three floors is this impressive semi-detached home in the sought-after Conservation area. The property features a characterful reception room, a formal dining room, kitchen/diner, five bedrooms, three bathrooms and a large well maintained rear garden.

Upon entering, there is a wide, welcoming hallway, with a generous reception room to the left and a large dining room further down the hall. To the rear is a welcoming kitchen diner with French doors onto a mature garden. A w/c and cellar access complete the ground floor.

The principal bedroom on the first floor has a large bay window and an en-suite bathroom. Over the first and second floors are a further four double bedrooms and two bathrooms.

Harefield Road is an attractive tree lined street located in the Brockley Conservation area with transport links from Brockley, Crofton Park and Ladywell train stations.

Features

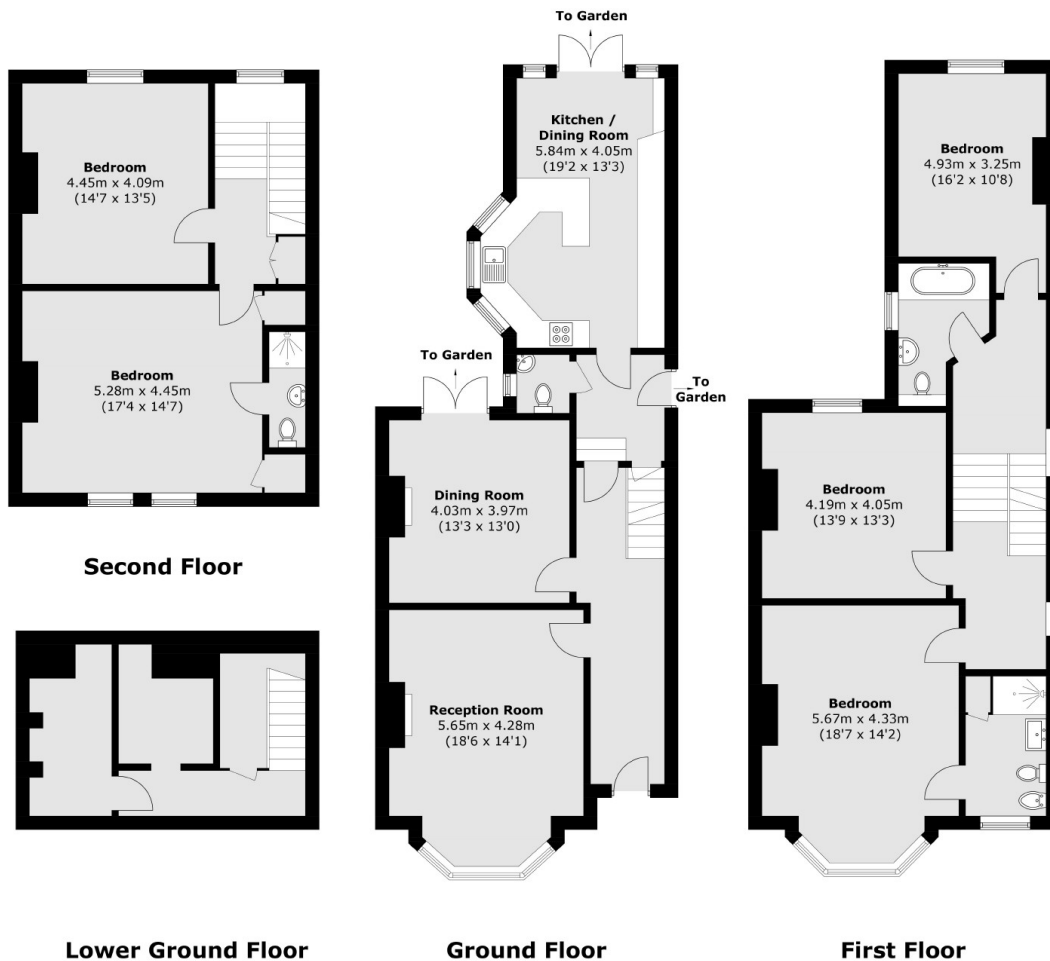
- Victorian House
- Semi-Detached
- Five Bedrooms
- Three Bathrooms
- Large Rear Garden
- Period Features







Harefield Road, London, SE4



Total area (approx.): 242.4 sq. m (2,609.1 sq. ft)

Dexters

Brockley
369 Brockley Road
London
SE4 2AG
Sales
020 8815 2220

Energy Rating: D. We aim to make our particulars both accurate and reliable. However they are not guaranteed; nor do they form part of an offer or contract. If you require clarification on any points then please contact us, especially if you're traveling some distance to view. Please note that appliances and heating systems have not been tested and therefore no warranties can be given as to their good working order.

 **RICS** | Regulated
Estate Agent
and Letting Agent

[dexters.co.uk](https://www.dexters.co.uk)