



Elmira Street, SE13

£295,000

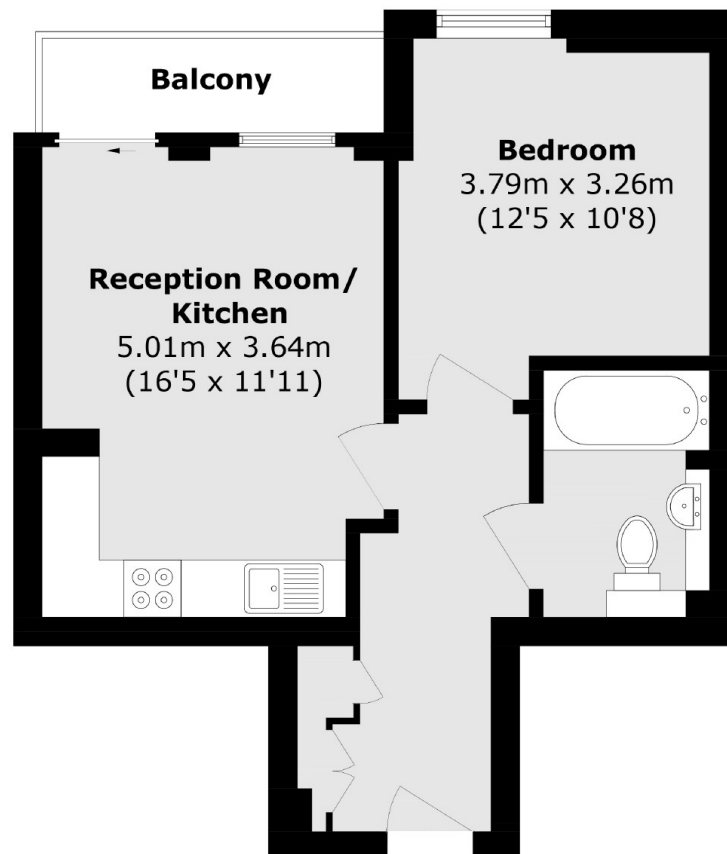
A modern one bedroom apartment on the eleventh floor of the popular Renaissance development. This apartment has an open plan reception room, private balcony, concierge and communal roof terrace.

Venice Corte is conveniently located for both Lewisham and Ladywell Village with Brockley Market moments away. Well positioned for both St Johns and Lewisham train station, providing fast, direct links into central London and Canary Wharf.

Features

- Private Balcony
- Communal Roof Terrace
- Eleventh Floor
- Lift Access
- Open Plan
- Concierge

Elmira Street, London, SE13



Total area (approx.): 42.7 sq. m (459.6 sq. ft)

Balcony area (approx.): 3.5 sq. m (37.6 sq. ft)

Dexters

Brockley
369 Brockley Road
London
SE4 2AG
Sales
020 8815 2220

Energy Rating: B. We aim to make our particulars both accurate and reliable. However they are not guaranteed; nor do they form part of an offer or contract. If you require clarification on any points then please contact us, especially if you're traveling some distance to view. Please note that appliances and heating systems have not been tested and therefore no warranties can be given as to their good working order.

 **RICS** | Regulated
Estate Agent
and Letting Agent

[dexters.co.uk](https://www.dexters.co.uk)