



## Sandrock Road, SE13

### £1,000,000

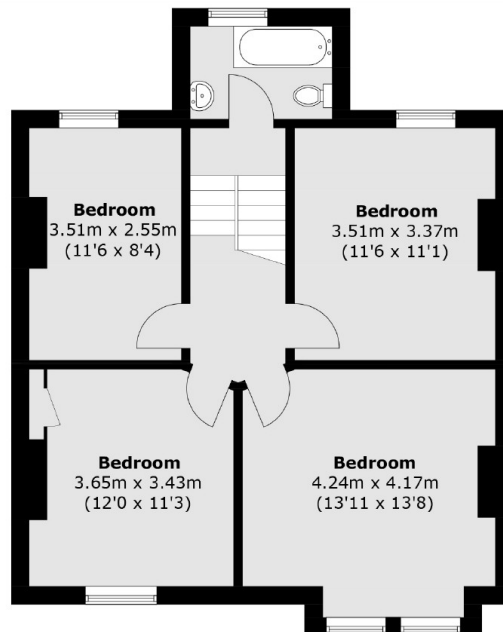
A double fronted Edwardian house with a stunning brick facade well positioned moments from Hilly Fields. There are four double bedrooms, three versatile use reception rooms and a private rear garden.

Sandrock road is a residential road located close to Lewisham town centre, Ladywell Village and fantastic local amenities. St. Johns and Lewisham stations with the DLR are nearby. The open spaces of Hilly Fields and Brookmill park also in close proximity.

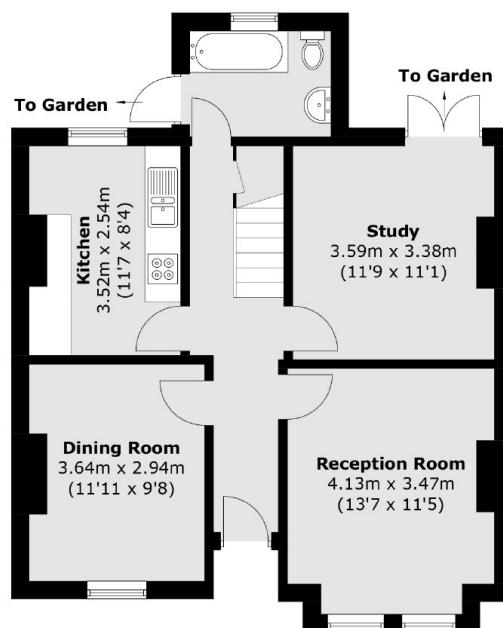
### Features

- Edwardian
- Double Fronted
- Four Bedrooms
- Private Garden
- Close To Hilly Fields
- Chain Free

Sandrock Road,  
London, SE13



**First Floor**



**Ground Floor**

Total area (approx.): 127.8 sq. m (1,375.6 sq. ft)

**Dexters**

Brockley  
369 Brockley Road  
London  
SE4 2AG  
Sales  
020 8815 2220

Energy Rating: . We aim to make our particulars both accurate and reliable. However they are not guaranteed; nor do they form part of an offer or contract. If you require clarification on any points then please contact us, especially if you're traveling some distance to view. Please note that appliances and heating systems have not been tested and therefore no warranties can be given as to their good working order.

 **RICS** | Regulated  
Estate Agent  
and Letting Agent

[dexters.co.uk](http://dexters.co.uk)