



Molesworth Street, SE13

£450,000

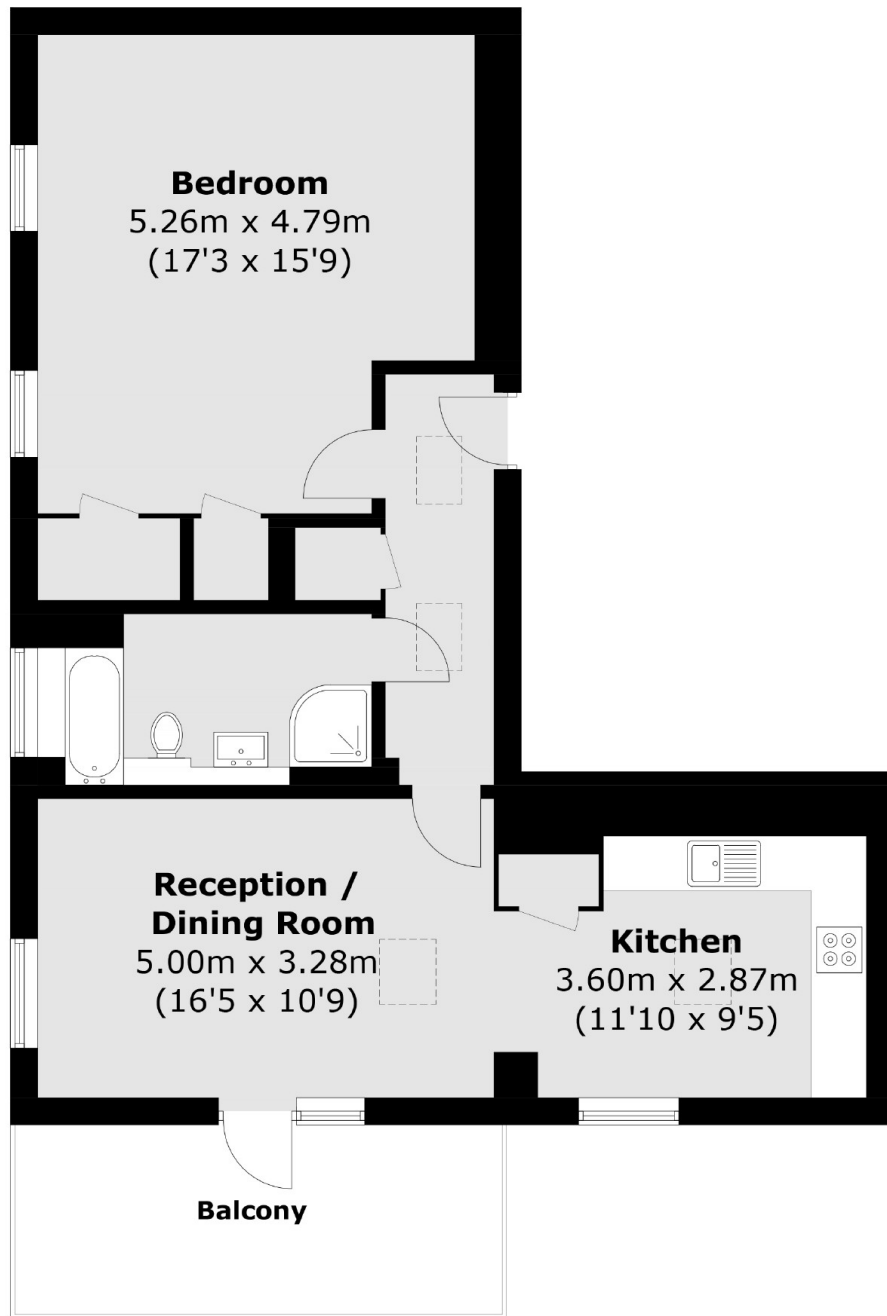
A contemporary one double bedroom apartment set in the Old Mill in the heart of Lewisham and moments from Ladywell village. The quality kitchen offers a range of integrated appliances, there is a large four-piece bathroom suit and a generous living/kitchen space leading to a charming balcony/winter garden. Offered with no onward chain.

Molesworth Street is conveniently positioned for Lewisham train and DLR stations. The amenities of Lewisham town centre are also within easy reach.

Features

- Large Double Bedroom
- Modern Apartment
- Excellent Condition
- Open Kitchen/Living Area
- Four-Piece Bathroom Suite
- Winter Garden

Molesworth Street, London, SE13



Total area (approx.): 72.0 sq. m (775.0 sq. ft)
Balcony (approx.): 11.1 sq. m (119.4 sq. ft)

Dexters

Brockley
369 Brockley Road
London
SE4 2AG
Sales
020 8815 2220

Energy Rating: B. We aim to make our particulars both accurate and reliable. However they are not guaranteed; nor do they form part of an offer or contract. If you require clarification on any points then please contact us, especially if you're traveling some distance to view. Please note that appliances and heating systems have not been tested and therefore no warranties can be given as to their good working order.

 **RICS** | Regulated
Estate Agent
and Letting Agent

[dexters.co.uk](https://www.dexters.co.uk)