

Ladywell Road, SE13

£400,000

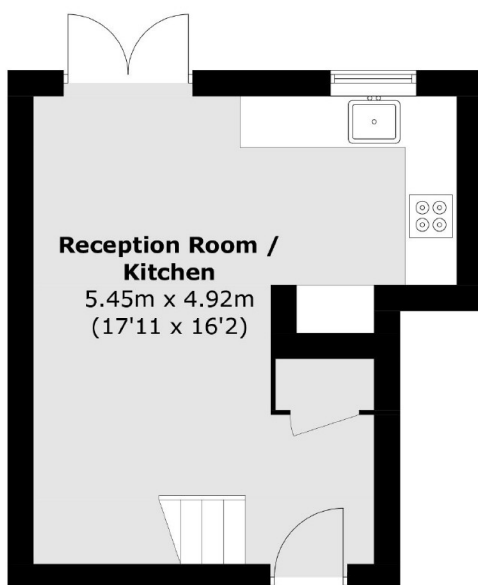
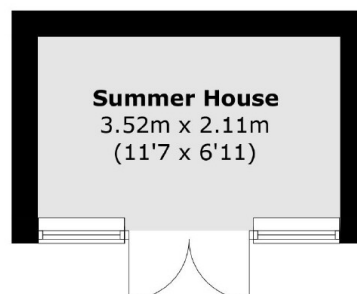
A stylish, bright and spacious one bedroom split level flat, that boasts a well landscaped, south facing garden. Conveniently positioned in the heart of Ladywell Village.

Ladywell Road is a popular road close to the open space of Hilly Fields Park and Ladywell Fields along with the amenities of Ladywell Village. Ladywell, Lewisham, Crofton Park and Brockley train stations offer excellent links into the City.

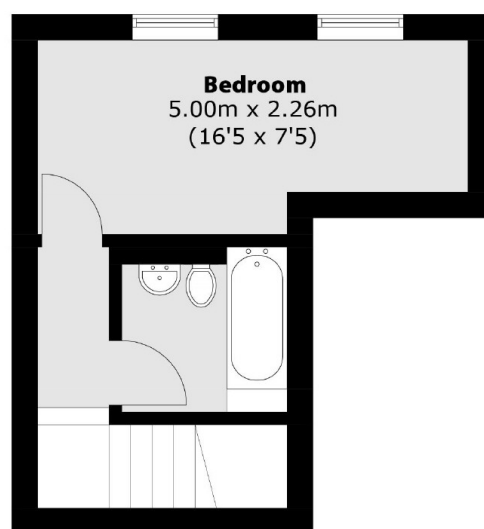
Features

- Period Conversion
- Split Level
- Hilly Fields Park
- Ladywell Village
- Close To Transport
- Private Landscaped Garden

Ladywell Road, London, SE13



Ground Floor



First Floor

Total area (approx.): 43.5 sq. m (468.2 sq. ft)
Summer House: 7.6 sq. m (81.8 sq. ft)