



## Greenside Close, SE6

£425,000

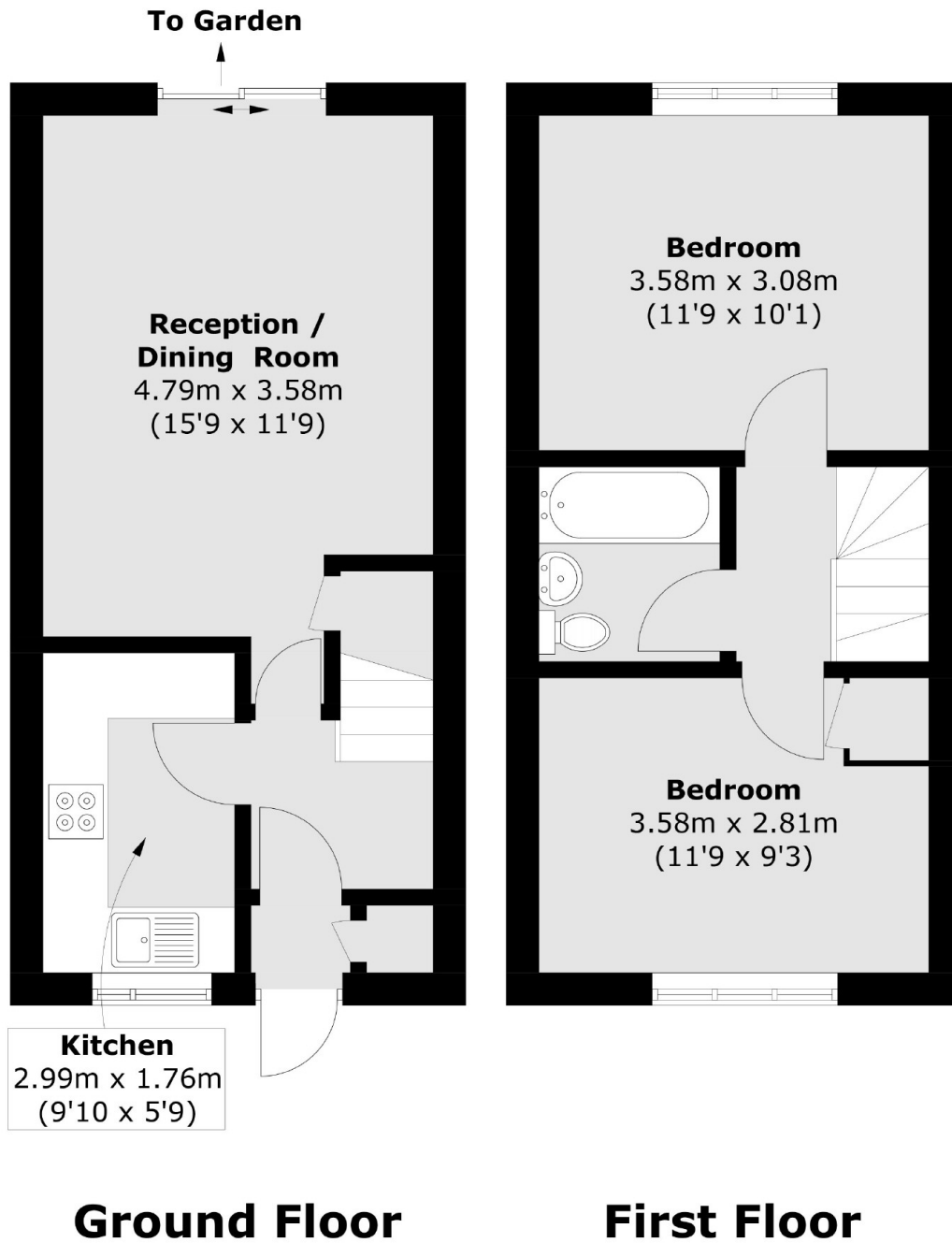
Offered with no onward chain in a secluded development is this charming two bedroom freehold house. With separate kitchen to the front of the property and open living space to the rear overlooking the private garden this property has a bright airy feel. Upstairs there are two double bedrooms and a family bathroom.

Greenside Close is located within easy reach of Forster Memorial Park along with Catford and Bellingham stations providing regular services into London and the City.

### Features

- Freehold
- Two double bedrooms
- Off street parking
- A charming rear garden
- Desirable location
- Chain Free

Greenside Close,  
London, SE6



Total area (approx.): 56.8 sq. m (611.3 sq. ft)