



Conington Road, SE13

£265,000

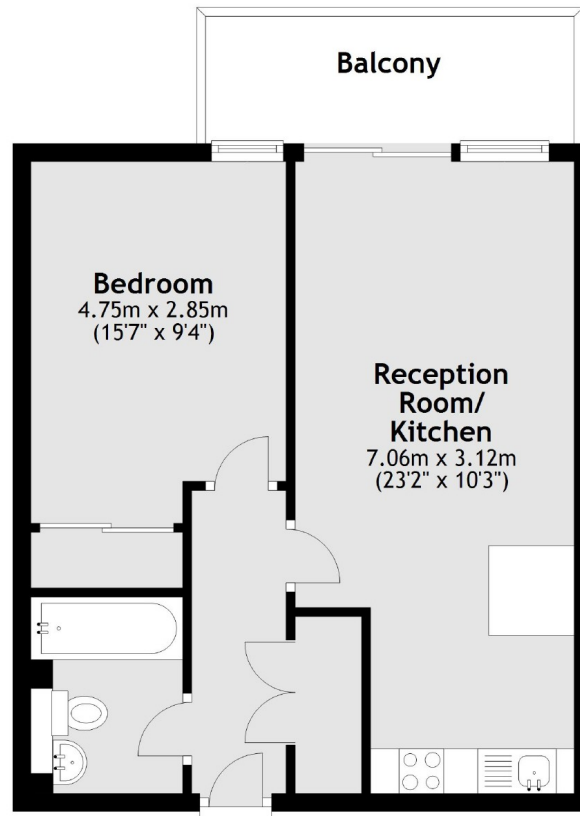
A modern one double bedroom first floor apartment with an open plan living/kitchen space which leads on to a large balcony with excellent views across the development. There is a double bedroom and separate bathroom. The development offers 24 hour concierge, communal grounds and has lift access.

Situated in an excellent position for the DLR and Lewisham station which are just minutes away, close to the town centre for shops and amenities for its cafés, bars and restaurants.

Features

- Large Reception Room
- Private Balcony
- Fitted Kitchen
- Concierge
- Moments From The DLR/ Lewisham Station

Conington Road,
London, SE13



Main area: Approx. 42.8 sq. metres (461.0 sq. feet)
Plus balconies, approx. 6.3 sq. metres (67.4 sq. feet)

Dexters

Brockley
369 Brockley Road
London
SE4 2AG
Sales
020 8815 2220

Energy Rating: B. We aim to make our particulars both accurate and reliable. However they are not guaranteed; nor do they form part of an offer or contract. If you require clarification on any points then please contact us, especially if you're traveling some distance to view. Please note that appliances and heating systems have not been tested and therefore no warranties can be given as to their good working order.

 **RICS** | Regulated
Estate Agent
and Letting Agent

[dexters.co.uk](https://www.dexters.co.uk)