



Blagdon Road, SE13

£625,000

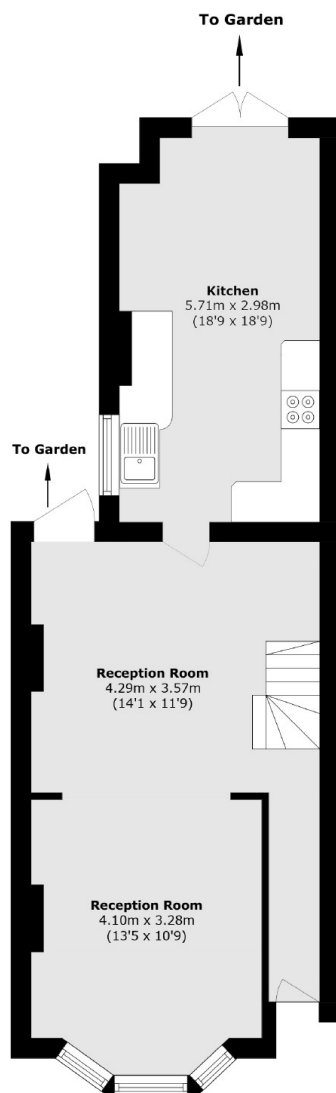
Located within close proximity to Ladywell Fields and Village as well as excellent transport links and amenities, this spacious three-bedroom Victorian terrace house offers significant potential for extension and personalisation and is offered with no onward chain.

Blagdon Road is a quiet road located moments from Ladywell Fields and close to all the local amenities Catford and Ladywell have to offer. It is a short walk to both Ladywell and Catford Stations giving frequent services into central London and the City.

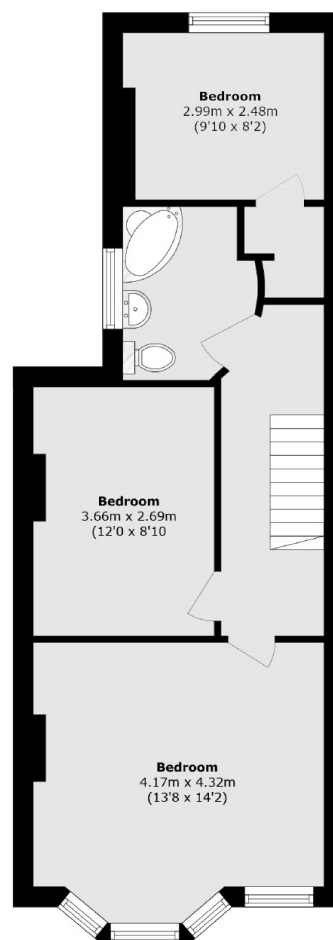
Features

- Three Bedrooms
- Double Reception Room
- Separate Kitchen
- Private Garden
- Close To Station
- Chain Free

Blagdon Road, London, SE13



Ground Floor



First Floor

Total area (approx.): 98.3 sq. m (1058.1 sq. ft)