



## Church Grove, SE13

£599,995

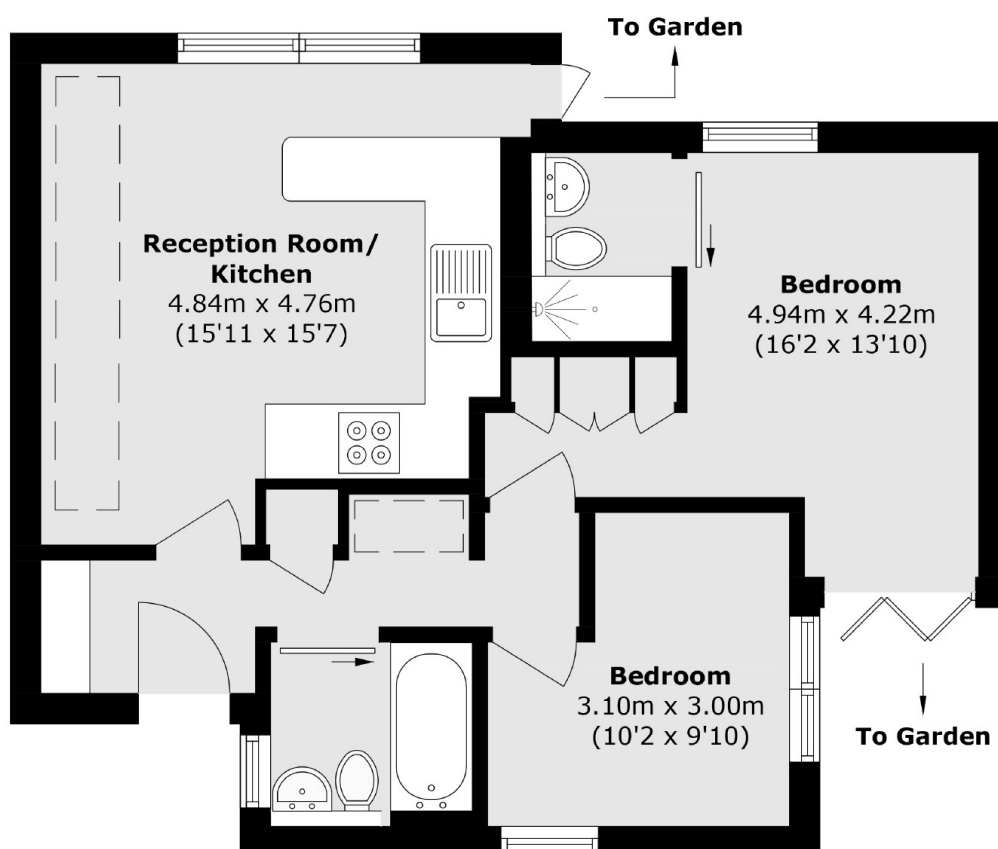
A stylish two double bedroom two bathroom house positioned on a quiet residential road moments from Ladywell Village. The open plan kitchen living space is light filled with access to a low maintenance private garden. The brand new kitchen boasts plenty of storage space and high end appliances. There is a shared courtyard garden for both bedrooms and the property is offered with no onward chain.

Church Grove is well positioned for the amenities of Ladywell Village, in close proximity to Ladywell Fields and Hilly Fields Park and ideal for the commuter being a short walk to Ladywell station giving frequent services into Charing Cross, London Bridge and Cannon Street.

### Features

- Two Double Bedrooms
- Two Bathrooms
- Freehold
- Private Garden
- Shared Courtyard
- Chain Free

# Church Grove, London, SE13



Total area (approx.): 58.3 sq. m (627.5 sq. ft)