



## Tyrwhitt Road, SE4

£550,000

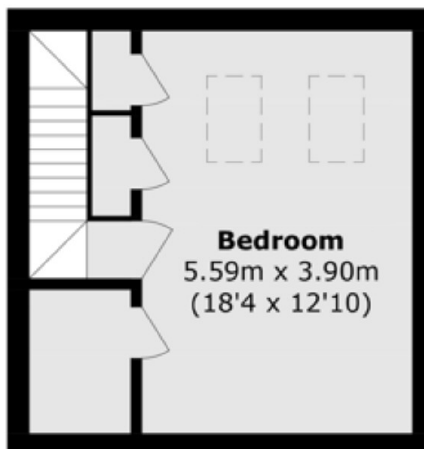
A well presented split level flat set within a pretty Victorian house favourably positioned on a prime road in Brockley's Conservation area. There is a bright reception/kitchen room with feature fireplace, two double bedrooms and offered with a freehold share and no onward chain.

Tyrwhitt Road is a highly sought after road in the Brockley Conservation area with excellent transport links from Brockley Overground, St. John's, Lewisham with the DLR and Ladywell train stations.

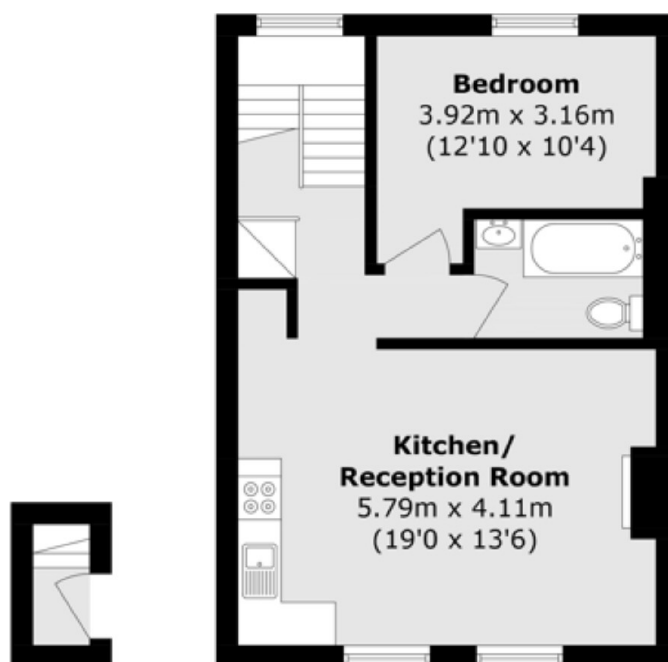
### Features

- Two Double Bedrooms
- Split Level
- Reception/Kitchen Room
- Brockley Conservation
- Share Of Freehold
- No Onward Chain

# Tyrwhitt Road, London, SE4



**Third Floor**



**First Floor**

**Second Floor**

Total area (approx.): 79.9 sq. m (860.0 sq. ft)