



## Station Road, SE13

£475,000

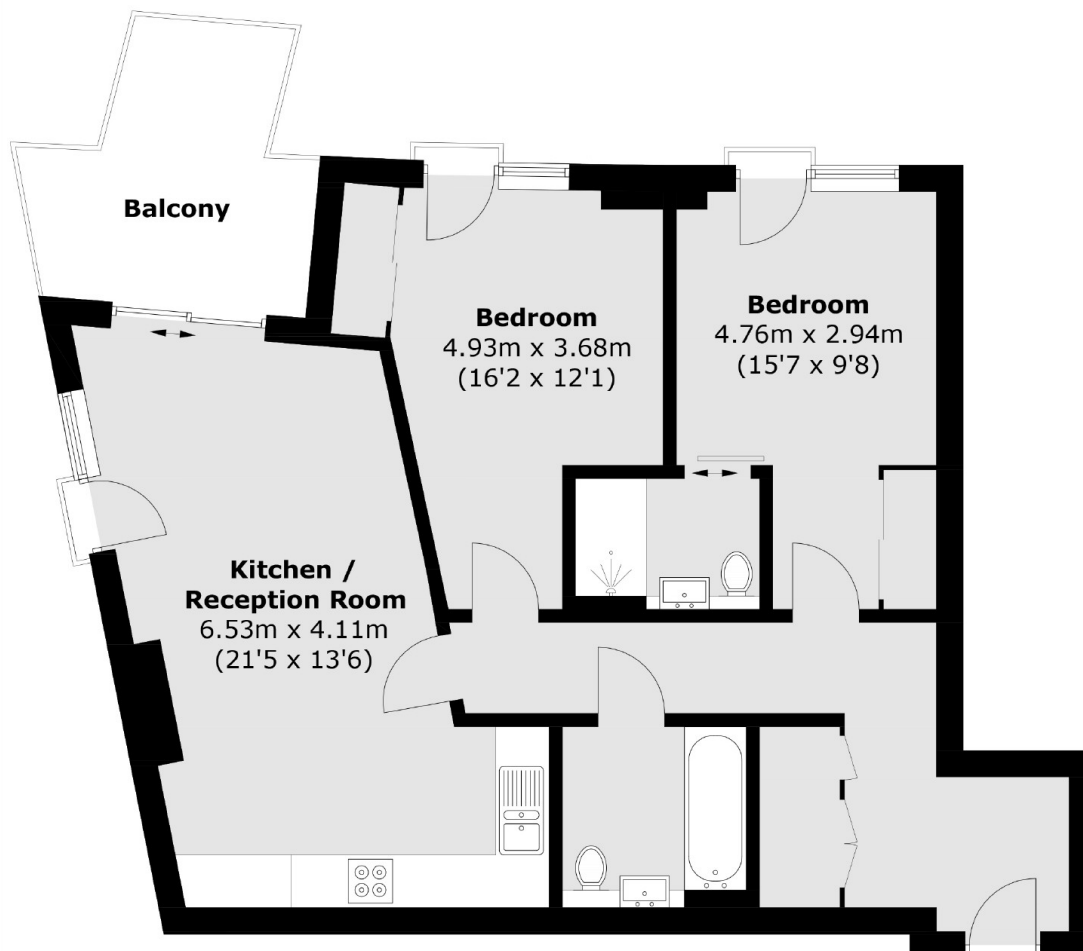
A well presented, two double bedroom, two bathroom, modern apartment with private balcony on the 22nd floor of this landmark development with roof terrace and panoramic views of London and no onward chain.

Enjoying unparalleled transport links from Lewisham Station and the Docklands Light Railway offering easy commute into London Bridge and Canary Wharf.

### Features

Two Bedrooms  
Private Balcony  
Roof Terrace  
Lift Access  
Concierge  
753 Sq Ft

# Station Road, London, SE13



Total area (approx.): 73.7 sq. m (793.3 sq. ft)  
Balcony: 8.3 sq. m (89.3 sq. ft)

## Dexters

Brockley  
369 Brockley Road  
London  
SE4 2AG  
Sales  
020 8815 2220

Energy Rating: B. We aim to make our particulars both accurate and reliable. However they are not guaranteed; nor do they form part of an offer or contract. If you require clarification on any points then please contact us, especially if you're traveling some distance to view. Please note that appliances and heating systems have not been tested and therefore no warranties can be given as to their good working order.

 **RICS** | Regulated  
Estate Agent  
and Letting Agent

dexters.co.uk