



Wickham Road, SE4

£425,000

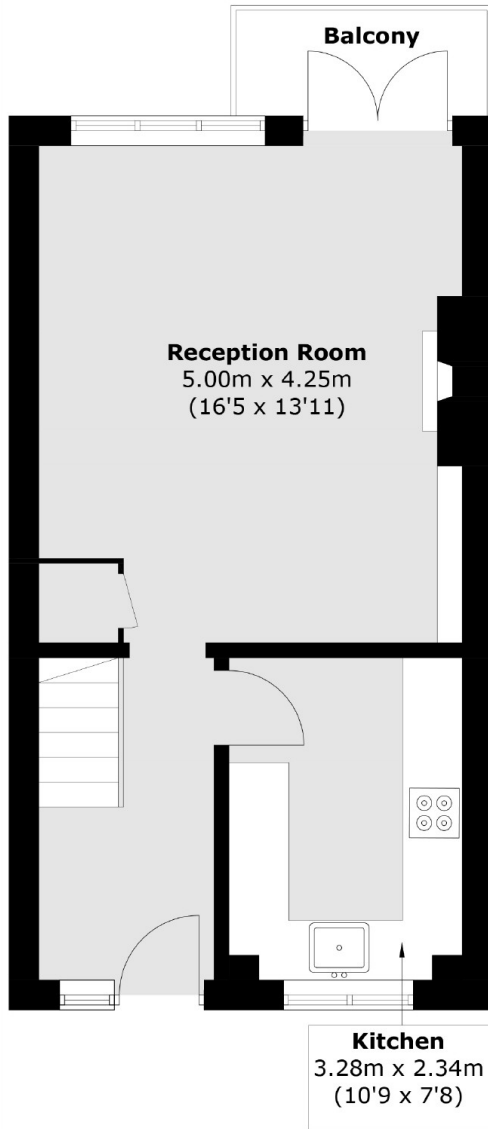
Tastefully renovated by the current owners, this two double bedroom split level apartment just shy of 774 Sq Ft is a perfect purchase. With a modern kitchen and bathroom, this home has been stylishly presented, creating a turn-key property in the sought after Brockley Conservation area, favourably positioned for Hilly Fields Park and the amenities of Brockley Road.

Wickham Road is a prime road in the Brockley Conservation area near to the popular Hilly Fields park and benefits from the local boutique shops, cafés and restaurants of Brockley and Ladywell. Brockley, Crofton Park and Ladywell stations are within easy reach with frequent services into London and the City.

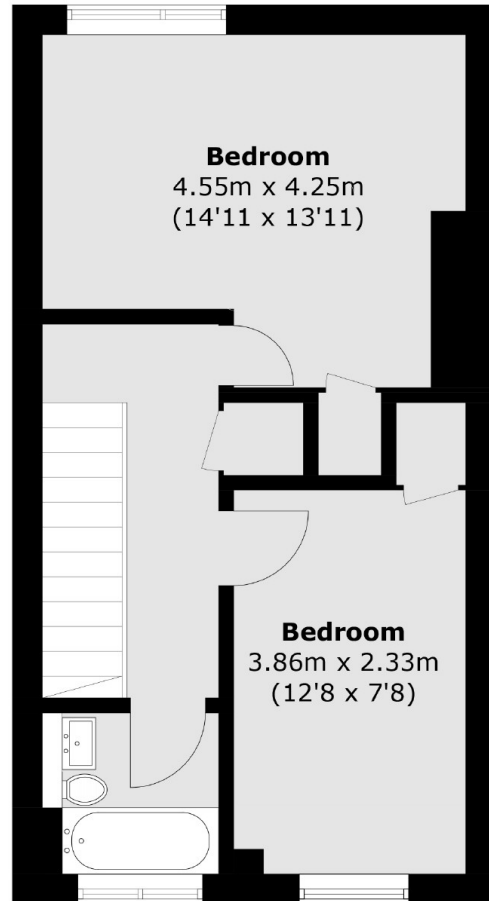
Features

- Two Bedrooms
- Spacious Reception
- Private Balcony
- Remodelled Kitchen
- Well Presented
- Close To Transport

Wickham Road, London, SE4



Second Floor



Third Floor

Total area (approx.): 71.9 sq. m (773.9 sq. ft)
Balcony: 2.7 sq. m (29.0 sq. ft)