



Tyrwhitt Road, SE4

£675,000

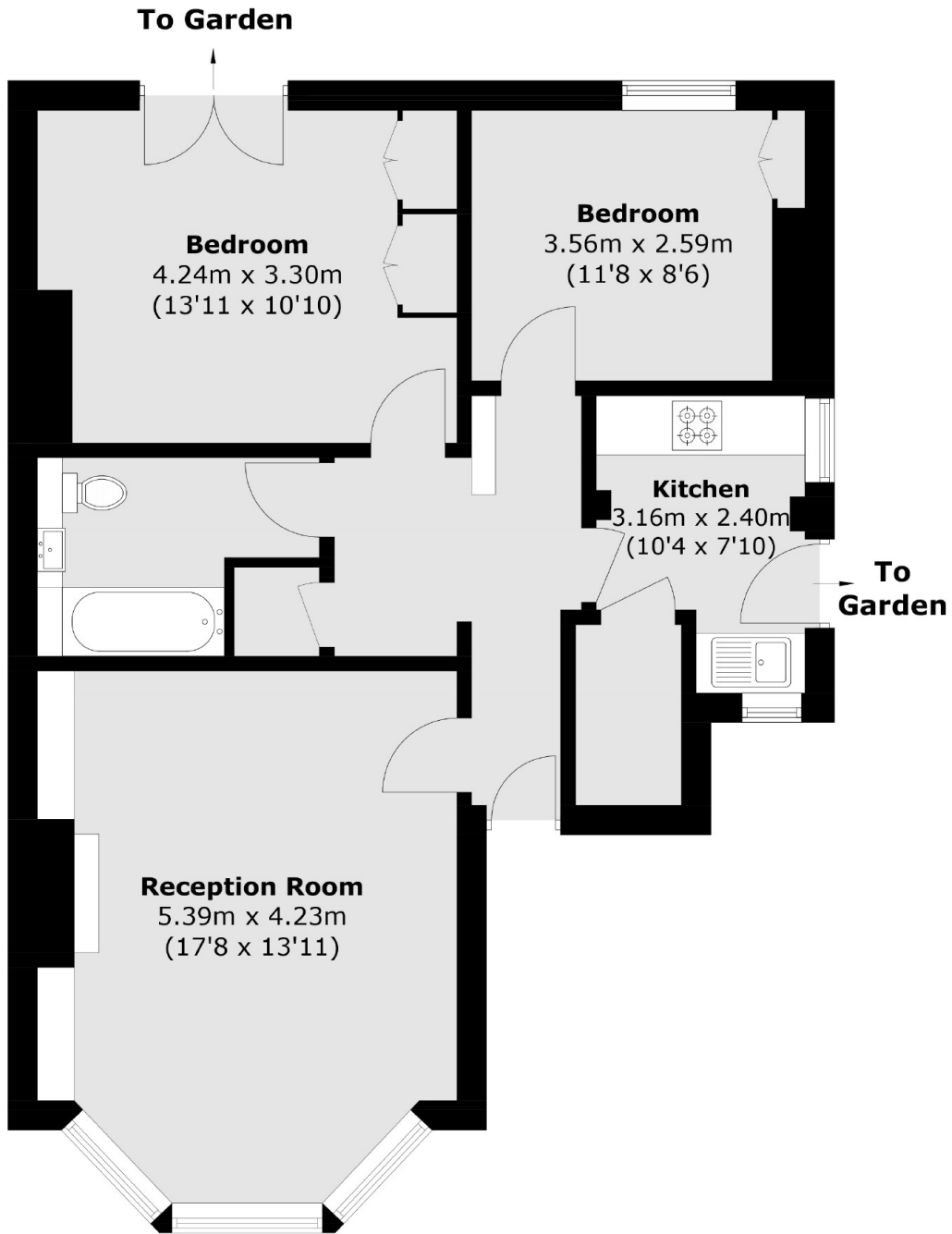
An impressive two double bedroom ground floor garden flat situated within an imposing Victorian building on a prime road in the Brockley Conservation area. Immaculately presented throughout, the bay fronted reception room is light filled, characterful and retains plenty of original features. A well presented kitchen offers access to the private low maintenance garden, and there is the added benefit of off street parking.

Tyrwhitt Road is a highly sought after road in the Brockley Conservation area with excellent transport links from Brockley Overground, St. John's, Lewisham with the DLR and Ladywell train stations.

Features

- Two Double Bedrooms
- Large Reception
- Brockley Conservation
- Share Of Freehold
- Private Garden
- Off Street Parking

Tyrwhitt Road,
London, SE4



Total area (approx.): 68.9 sq. m (741.6 sq. ft)