



Loampit Vale, SE13

£375,000

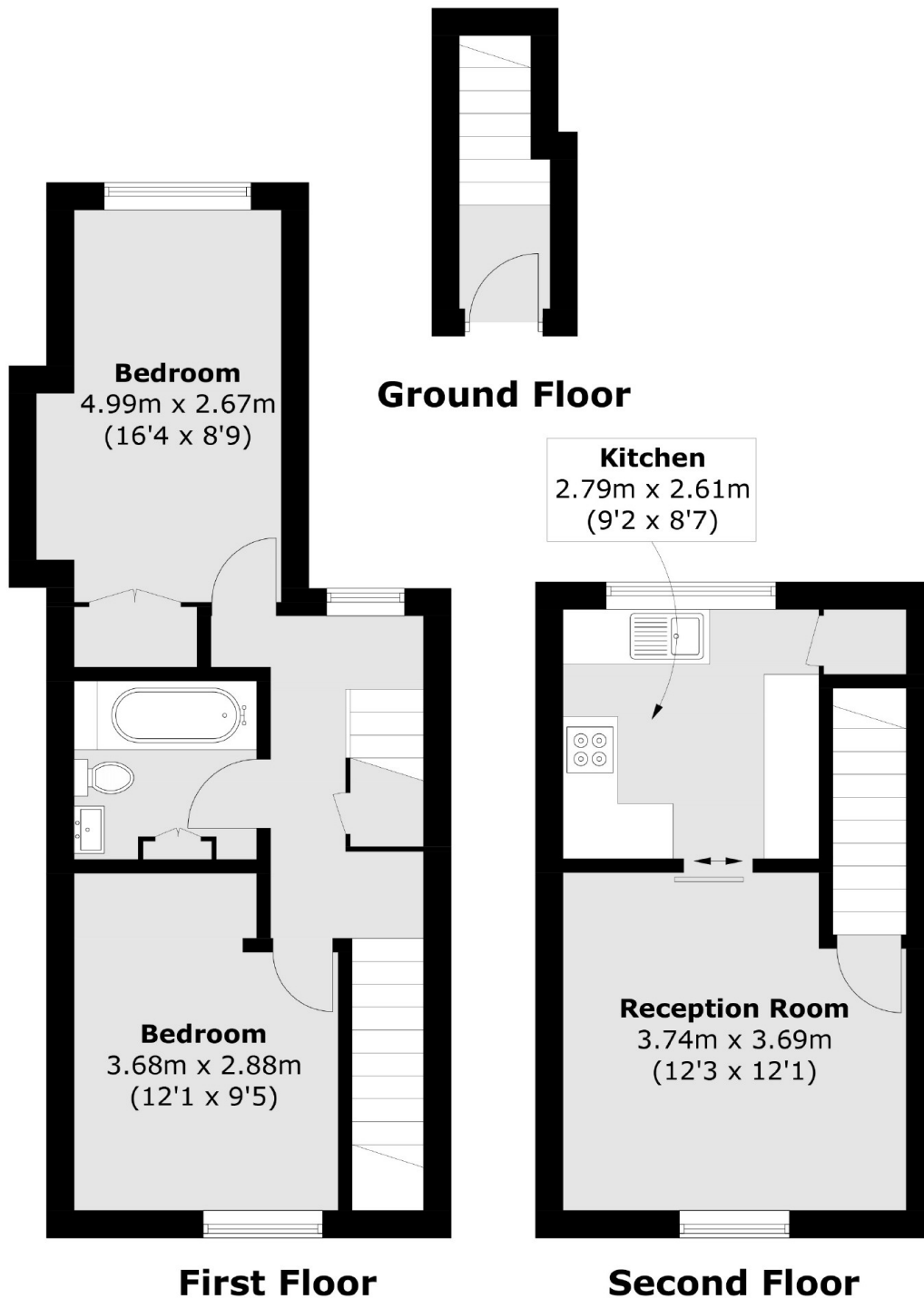
A well proportioned flat spread across three floors well positioned for Lewisham town centre. On the first floor the well presented bathroom is flanked by two double bedrooms both offering plenty of space. The characterful reception room is on the second floor offering space to dine leading to the kitchen beyond a smart pocket door.

Loampit Vale is conveniently located between Hilly Fields Park and Brookmill Park, with Brockley Market just around the corner and well positioned for both St Johns and Lewisham train stations with easy commute into London Bridge

Features

- Two Double Bedrooms
- Split Level
- Cosy Reception Room
- Separate Kitchen
- Modern Interior
- Close To Transport

Loampit Vale,
London, SE13



Total area (approx.): 62.8 sq. m (675.9 sq. ft)