



George Lane, SE13

£700,000

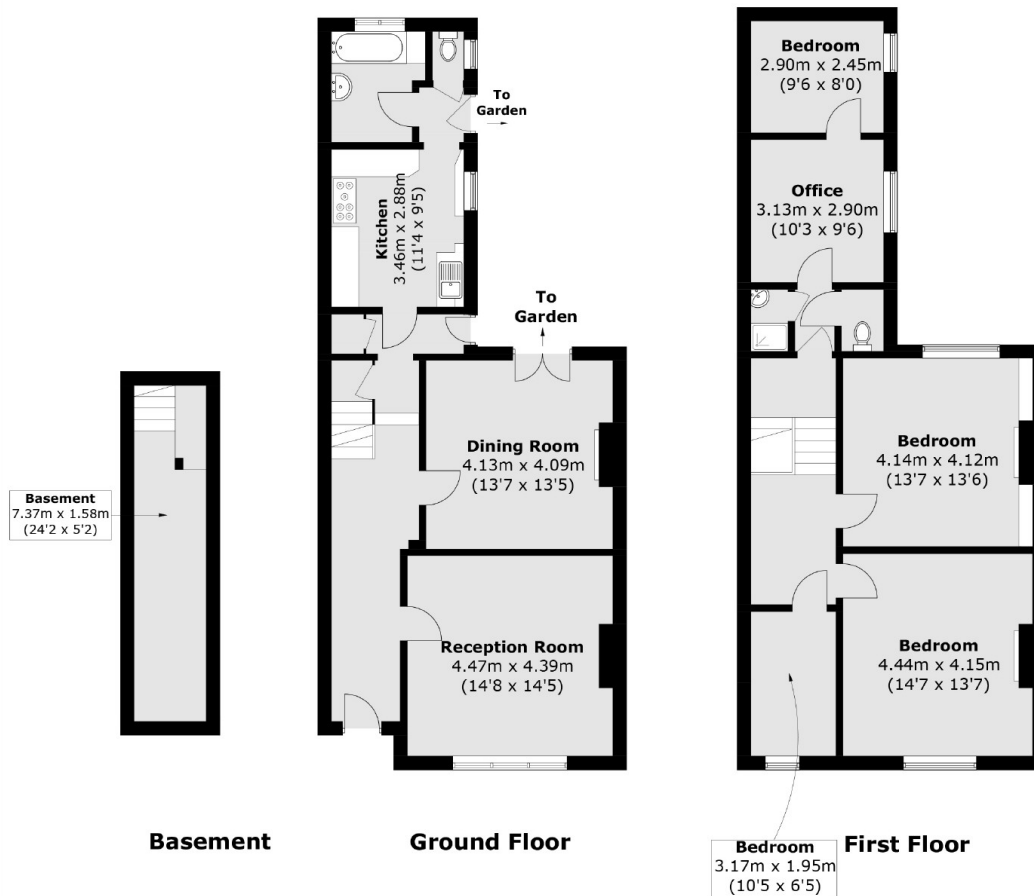
With potential to convert the loft and extend into the side return subject the usual consents, this generous Victorian house offering 1725 Sq Ft is the perfect opportunity to great a beautiful family home favourably positioned for Hither Green, Ladywell Vilalge and the open space of Mountsfield Park.

George Lane is a residential road equidistant from Hither Green, Ladywell and Catford stations with frequent services into London and the City.

Features

- Four Bedrooms
- Large Reception Room
- Victorian
- Large Garden
- Off Street Parking
- Further Potential To Extend

George Lane, London, SE13



Total area (approx.): 160.3 sq. m (1725 sq. ft)
(Including Basement)