



Lewisham Park, SE13

£525,000

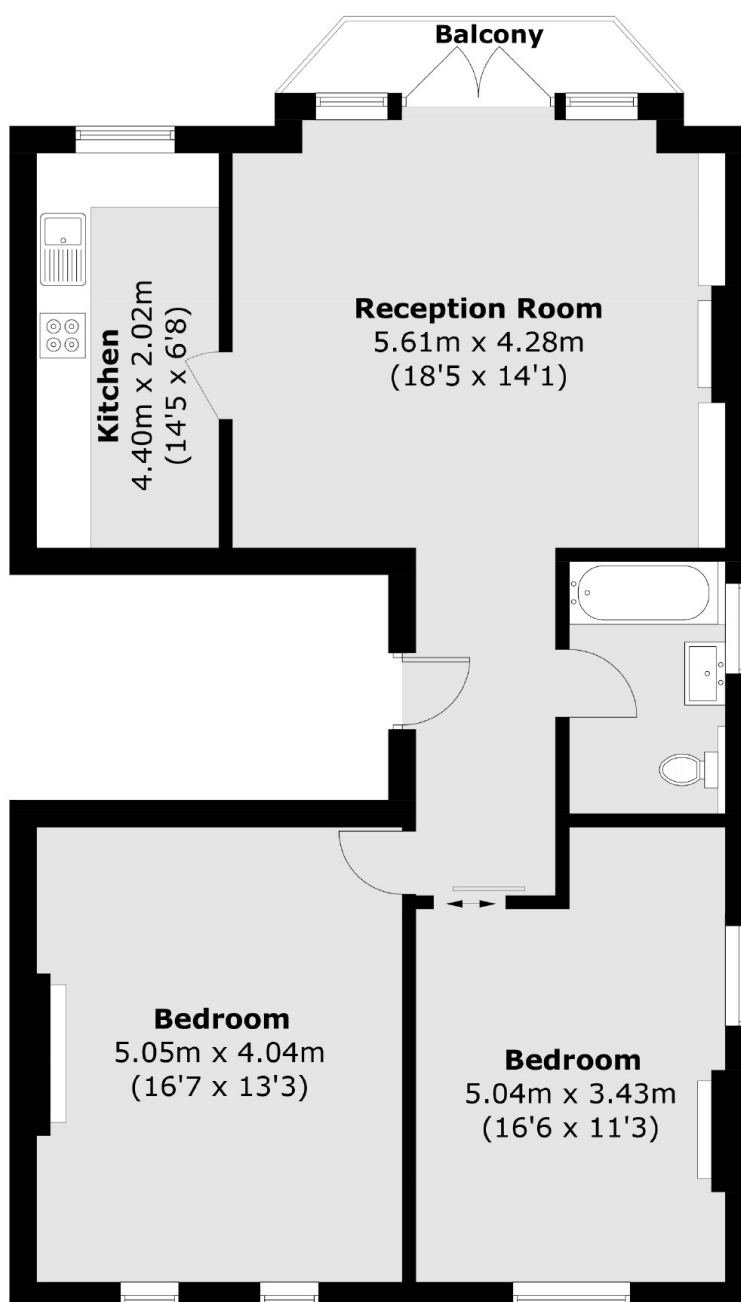
A delightful period conversion set on the first floor of an imposing Victorian villa with views overlooking Lewisham Park. There are two double bedrooms, a large reception room with private balcony and a well maintained kitchen with tall ceilings.

Lewisham Park is a quiet residential road in the Lewisham Park conservation area, a short walk from Mountsfield Park and Ladywell Fields. Independent shops, cafés and wine bars are just moments away, with nearby Ladywell and Hither Green stations providing easy access to central London.

Features

- Two Double Bedrooms
- Large Reception Room
- Excellent Condition
- Cellar Storage
- Lewisham Park Conservation
- Close To Transport

Lewisham Park, London, SE13



Total area (approx.): 84.4 sq. m (908.5 sq. ft)
Balcony: 2.9 sq. m (31.2 sq. ft)

Dexters

Brockley
369 Brockley Road
London
SE4 2AG
Sales
020 8815 2220

Energy Rating: D. We aim to make our particulars both accurate and reliable. However they are not guaranteed; nor do they form part of an offer or contract. If you require clarification on any points then please contact us, especially if you're traveling some distance to view. Please note that appliances and heating systems have not been tested and therefore no warranties can be given as to their good working order.

 **RICS** | Regulated
Estate Agent
and Letting Agent

[dexters.co.uk](https://www.dexters.co.uk)