



Embleton Road, SE13

£435,000

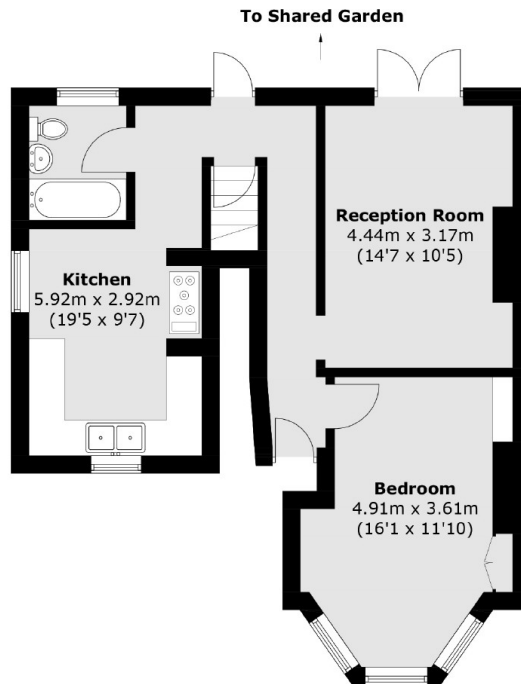
Beautifully presented one bedroom Victorian conversion flat in a sought after road close to Ladywell station and Hilly Fields. This lovely starter home brings with it a bright reception room with French doors leading to the garden, double bedroom and a well presented kitchen/diner. Finally, the lower ground floor offers an abundance of space and potential to convert (STPP).

Embleton Road is a quiet road located moments from Hilly Fields and between Ladywell, Lewisham and Brockley train stations giving excellent transport links into London and the city.

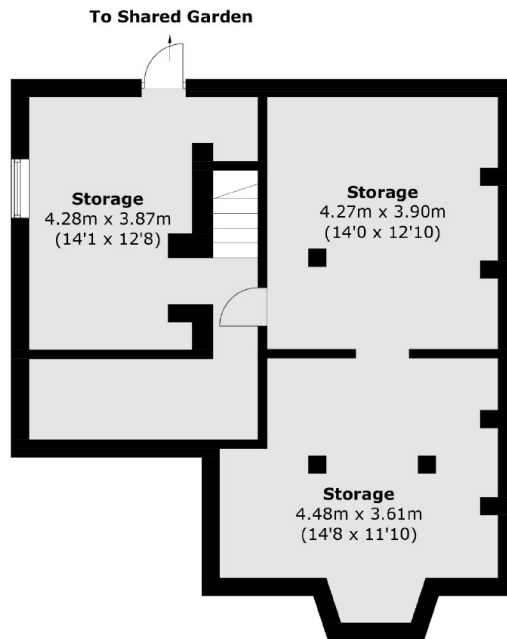
Features

- Period Conversion
- Private Balcony
- Communal Garden
- Close To Transport
- Close To Local Schools & Parks
- Over 1200 Sq Ft

Embleton Road, London, SE13



Ground Floor



Lower Ground Floor

Total area (approx.): 113.3 sq. m (1,219.6 sq. ft)