



Gillian Street, SE13

£680,000

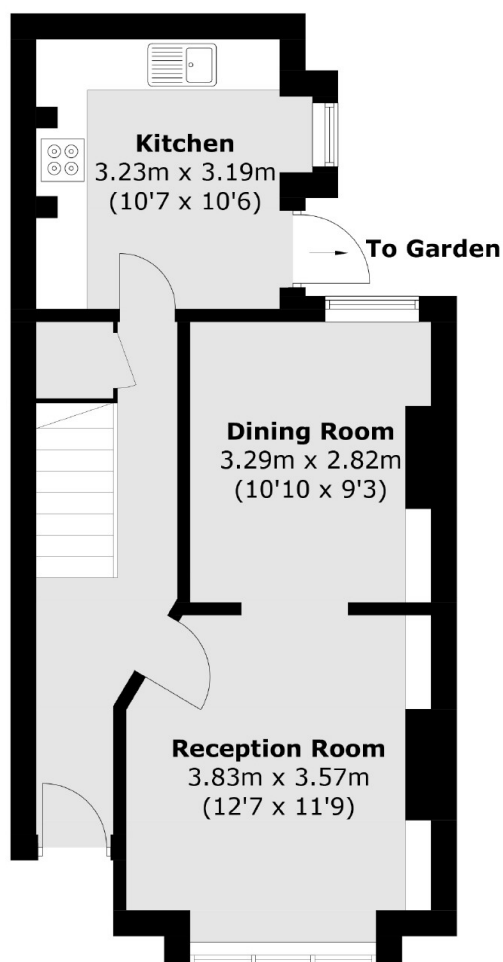
A charming brick fronted Edwardian house favourably positioned for Ladywell Village and the verdant expanse of Hilly Fields Park and Ladywell Fields. There are three upstairs bedrooms, a double reception with plenty of natural light and a comfortable dining space and a well presented kitchen leading onto a courtyard garden.

Gillian Street is a quiet road located in popular Ladywell Village and close by to all its local amenities. It is a short walk to Ladywell Station giving frequent services into Charing Cross and Cannon Street. Ladywell and Hilly Fields are both moments away.

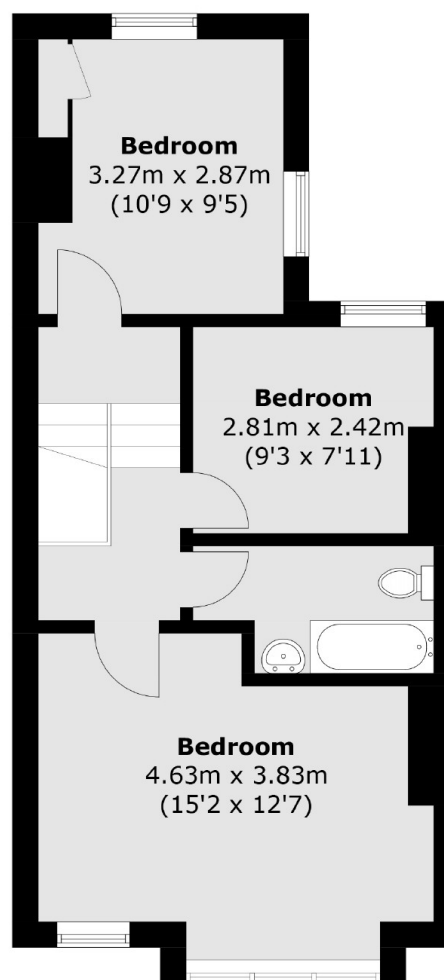
Features

- Three Bedrooms
- Two Reception Rooms
- Large Kitchen
- Residential Road
- Close To Transport
- 912 Sq Ft

Gillian Street, London, SE13



Ground Floor



First Floor

Total area (approx.): 84.8 sq. m (912.7 sq. ft)