



Ladywell Road, SE13

£850,000

An imposing characterful Victorian house with a raised ground floor and set over four floors moments from Ladywell Village.

Ladywell Road is well positioned for the amenities of Ladywell Village, in close proximity to Ladywell Fields and Hilly Fields Park and ideal for the commuter being a short walk to Ladywell station giving frequent services into Charing Cross, London Bridge and Cannon Street.

Features

- Three Bedrooms
- Four Storeys
- Off Street Parking
- Close To Ladywell Fields
- Close To Transport
- Generous Garden



Ladywell Road, SE13

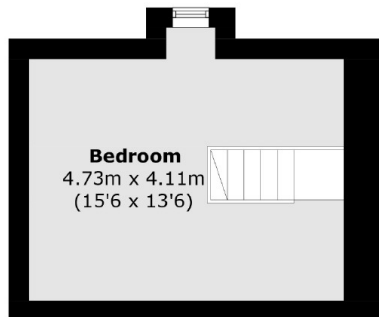
The house is set behind a well maintained front garden with steps leading up to the raised ground floor. A light filled through lounge occupies the ground floor with characterful sash windows to the front and rear.

The first and second floors offer three double bedrooms, with a generous size principal bedroom at the front of the house.

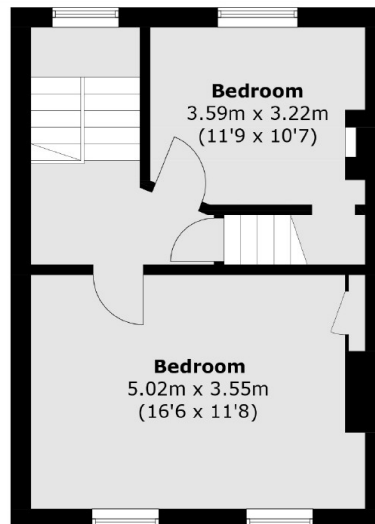
On the lower ground floor is a remodelled kitchen/diner with integrated appliances, there is an island with induction hob. The dining space is to the rear with bi-fold doors giving views out onto the mature rear garden.



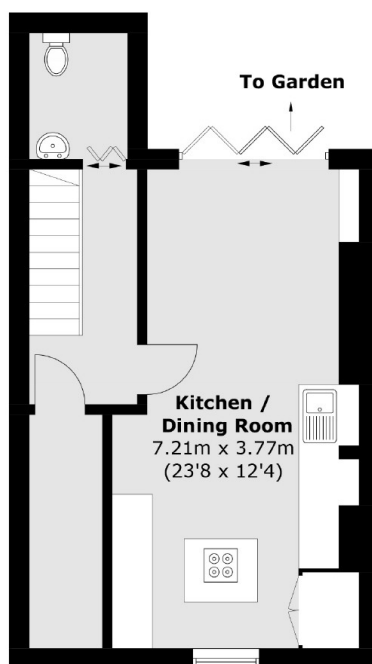
Ladywell Road, London, SE13



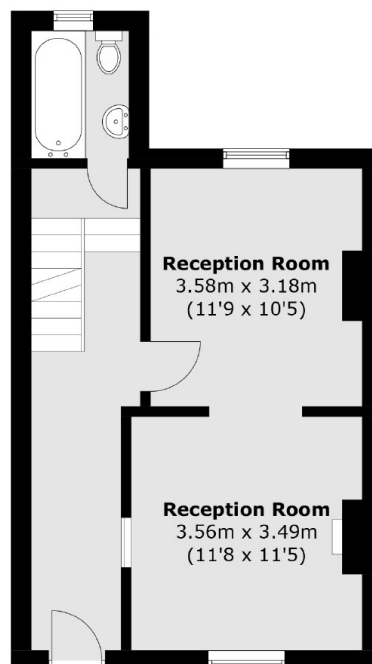
Second Floor



First Floor



Lower Ground Floor



Ground Floor

Total area (approx.): 132.0 sq. m (1420.7 sq. ft)