



Limes Grove, SE13

£360,000

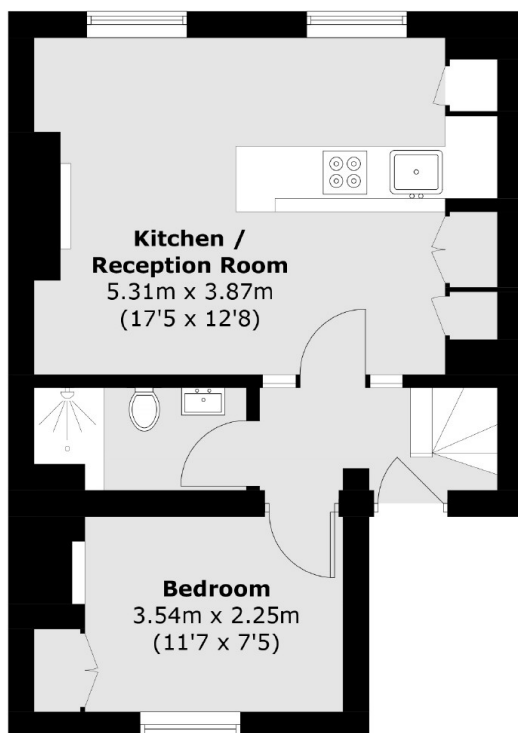
An impressive split-level period conversion across the upper floors of a brick fronted Victorian house. There is an open plan reception room with a contemporary kitchen, two double bedrooms along with a share of the freehold and offered with no onward chain.

Limes Grove is conveniently positioned for Lewisham train and DLR stations. The amenities of Lewisham town centre are also within easy reach.

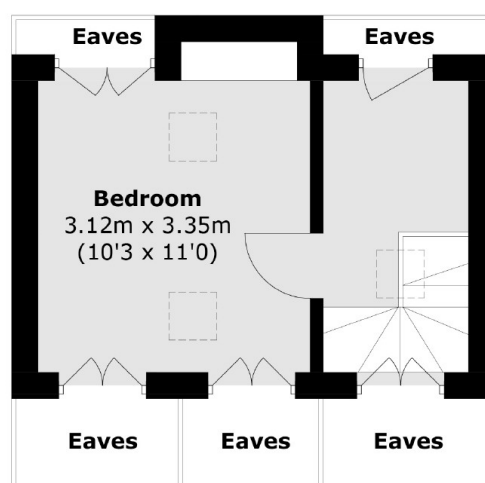
Features

- Top Floor Flat
- Two Double Bedrooms
- Open Plan Kitchen Living
- Share Of Freehold
- Close To Transport
- Chain Free

Limes Grove, London, SE13



Second Floor



Third Floor

Total area (approx.): 54.6 sq. m (587.7 sq. ft)
(Excluding Eaves)