

Elmira Street, SE13

£450,000

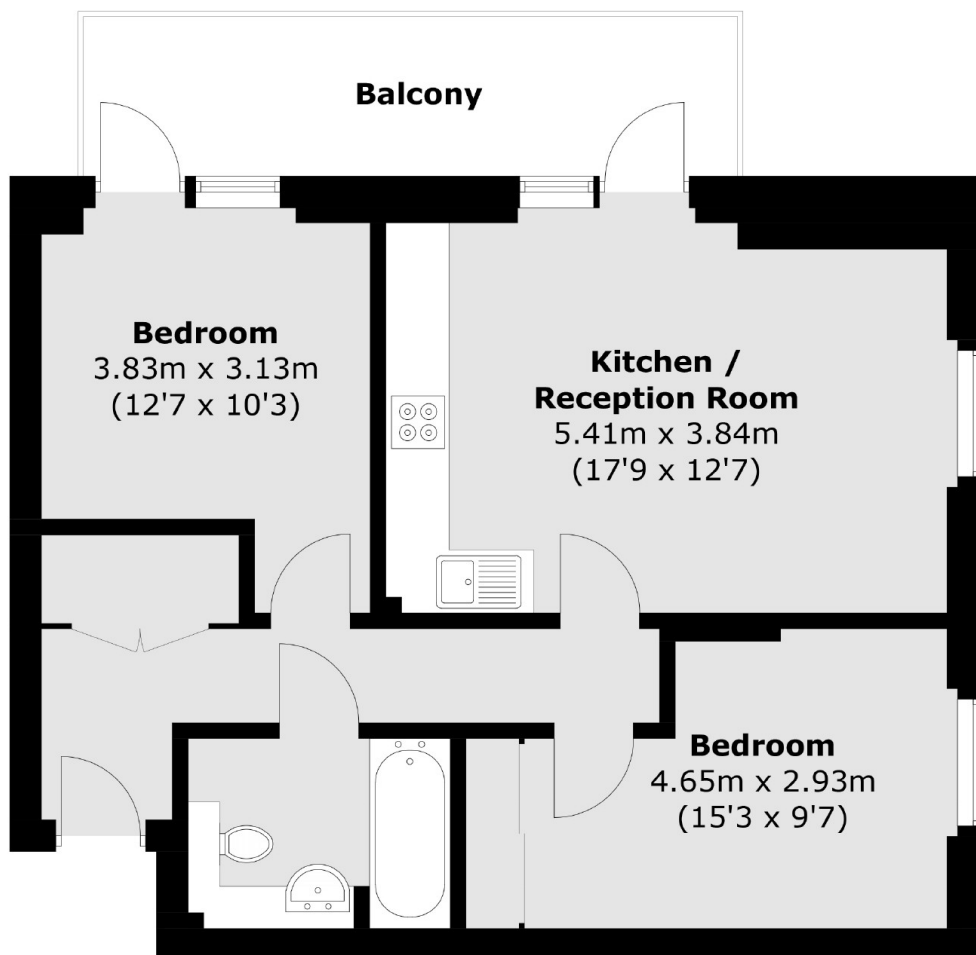
A modern two double-bedroom apartment in the sought-after Renaissance development with a light, open plan and spacious fitted kitchen reception room and private south-facing balcony. Ideally located for easy access to Lewisham town centre's amenities and transport links.

Loampit Vale is conveniently located for both Lewisham and Ladywell Village with Brockley Market moments away. Well positioned for both St Johns and Lewisham train stations with easy commute into London Bridge and Canary Wharf.

Features

- Two Double Bedrooms
- Private Balcony
- Designated Secure Parking
- Communal Roof Terrace
- Lift Access
- Chain Free

Elmira Street, London, SE13



Total area (approx.): 58.2 sq. m (626.4 sq. ft)
Balcony: 9.3 sq. m (100.1 sq. ft)