



Adelaide Avenue, SE4

£450,000

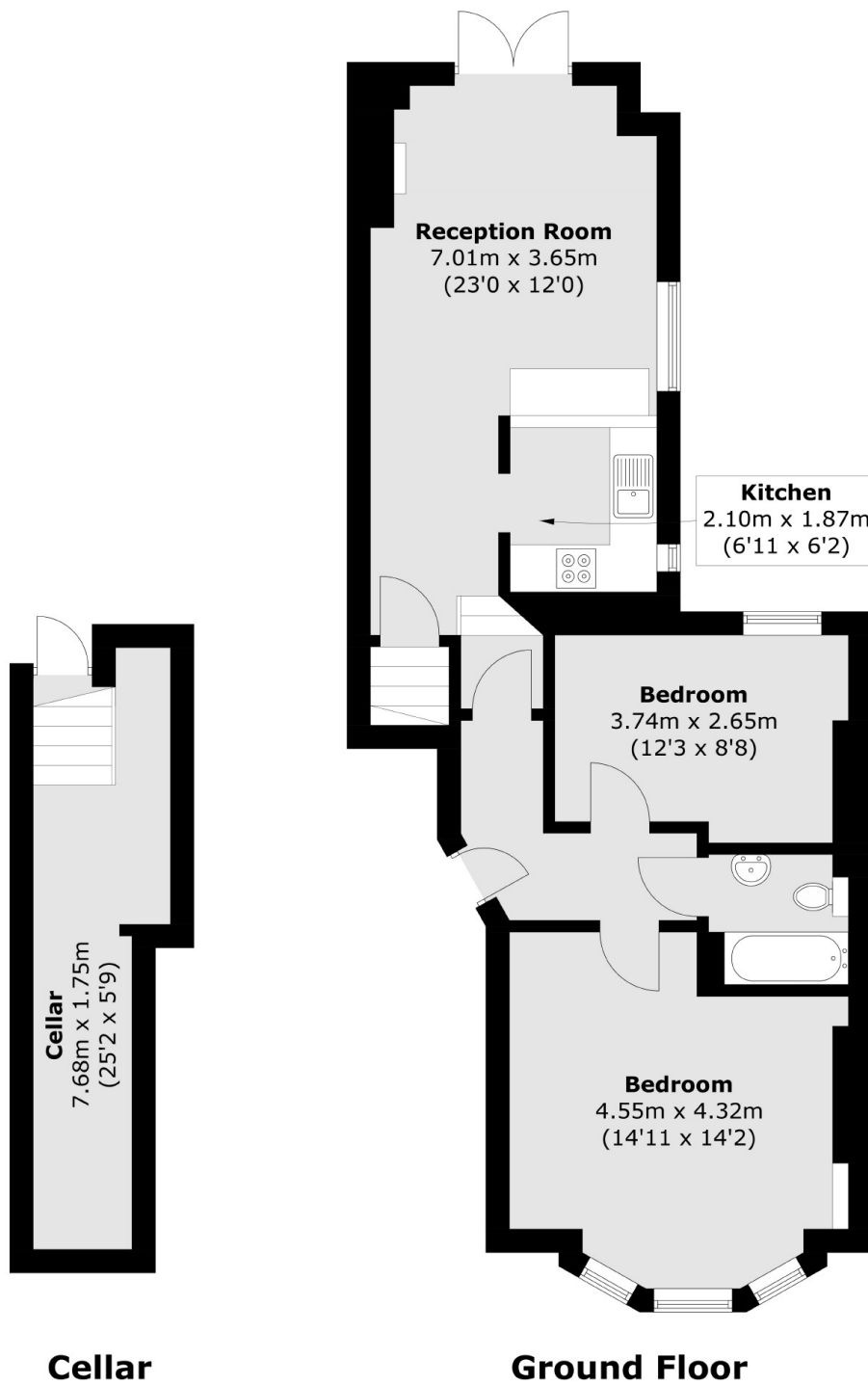
A ground floor garden flat in a beautiful Victorian building moments from Hilly Fields. There are two double bedrooms, a good size kitchen/reception room and access to a handy cellar. There is also off street parking, an opportunity to modernise throughout and no onward chain.

Adelaide Avenue is a desirable road in the Brockley Conservation area and moments from Brockley Road with its vibrant range of local shops, cafés and restaurants nearby. The fantastic transport links from Brockley, Crofton Park and Ladywell stations provide frequent services into London and the city.

Features

- Two Double Bedrooms
- Private Rear Garden
- Off Street Parking
- Modernisation Potential
- Close To Transport
- No Onward Chain

Adelaide Avenue, London, SE4



Total area (approx.): 63.3 sq. m (681.4 sq. ft)
Cellar: 11.0 sq. m (118.4 sq. ft)