



Arthurdon Road, SE4

£880,000

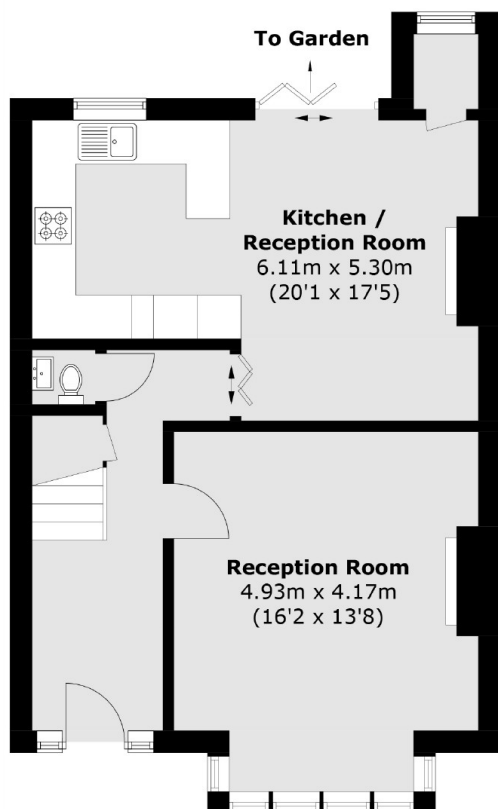
A pretty three bedroom late Edwardian house on a prime road in the Heath Estate. The house has been well looked after and has the perfect kitchen diner entertaining space with bi-folds doors out to a generous well maintained garden.

Arthurdon Road is a popular tree lined road close to the open spaces of Hilly Fields and Ladywell Fields parks and the amenities of Ladywell Village. There are excellent transport links from nearby Ladywell, Crofton Park and Brockley train stations.

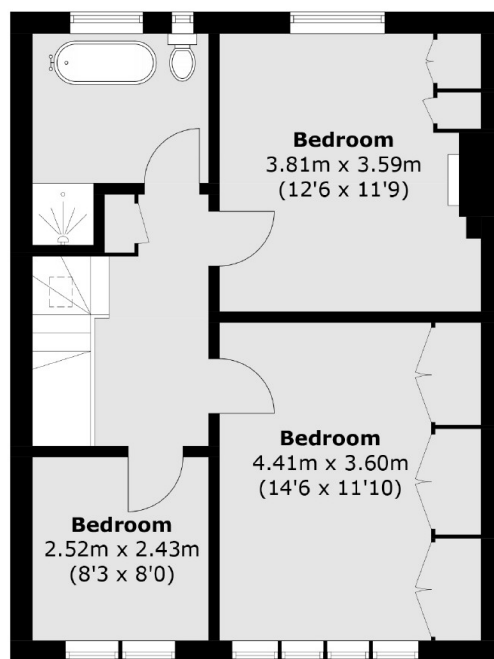
Features

- Three Bedrooms
- Well Maintained Family Home
- Heath Estate
- Large East Facing Garden
- Close To Transport
- Large Cellar

Arthurdon Road, London, SE4



Ground Floor



First Floor

Total area (approx.): 105.8 sq. m (1,138.8 sq. ft)