



Foxborough Gardens, SE4

£550,000

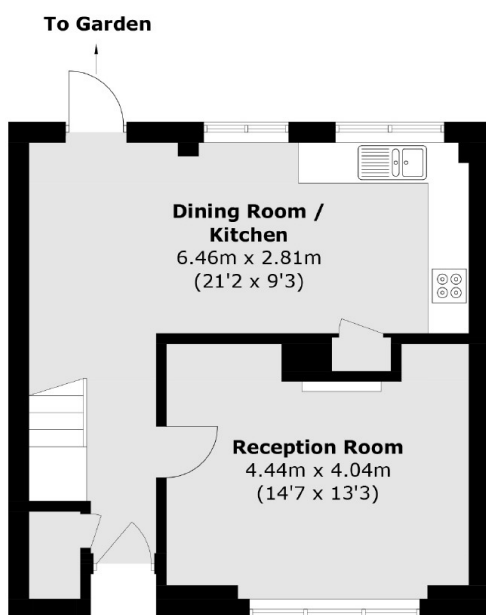
A mid terrace house in a quiet cul-de-sac well positioned for Brockley and Ladywell Village. There are two double bedrooms with a versatile third, a generous reception room and private front and rear gardens, with renovation opportunity and offered with no onward chain.

Foxborough Gardens is well positioned for both Brockley and Ladywell Village with excellent transport links and frequent services into London and the City from Crofton Park, Ladywell and Brockley stations.

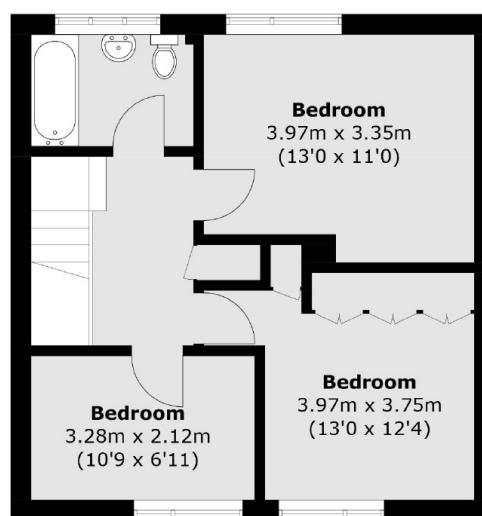
Features

- Three Bedrooms
- Generous Reception Room
- Private Rear Garden
- Cul-De-Sac
- Close To Transport
- Chain Free

Foxborough Gardens, London, SE4



Ground Floor



First Floor

Total area (approx.): 87.3 sq. m (939.7 sq. ft)