



Overcliff Road, SE13

£375,000

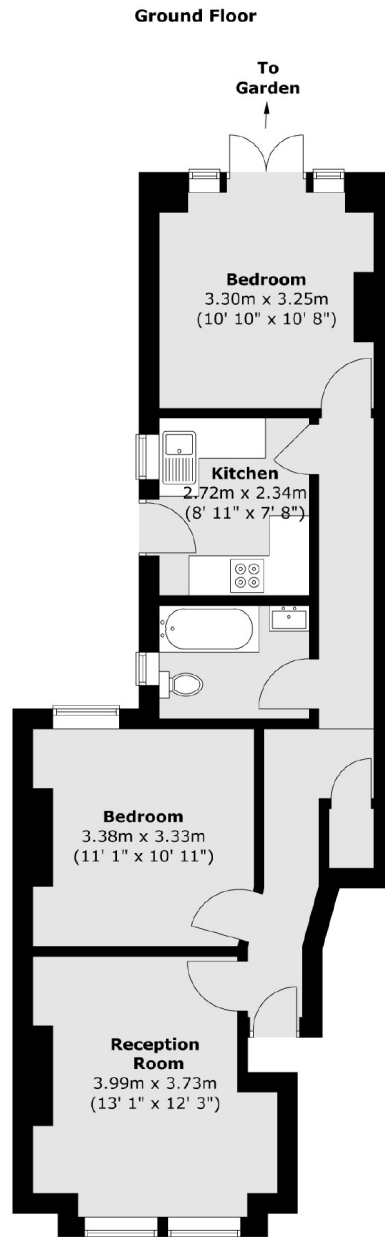
A ground floor, well proportioned two double bedroom Victorian conversion flat with direct access to a south facing garden. Well positioned for Hilly Fields and offered with no onward chain.

Overcliff Road is a quiet residential road close to Hilly Fields and is ideally located for access to St Johns, Lewisham and Ladywell train stations giving excellent transport links.

Features

- Ground Floor Flat
- Two Double Bedrooms
- Garden
- Quiet Residential Road
- Close To Transport
- Chain Free

Overcliff Road, London, SE13



Total area (approx.) : 58.4 sq. m (629 sq. ft)