



Shell Road, SE13

£450,000

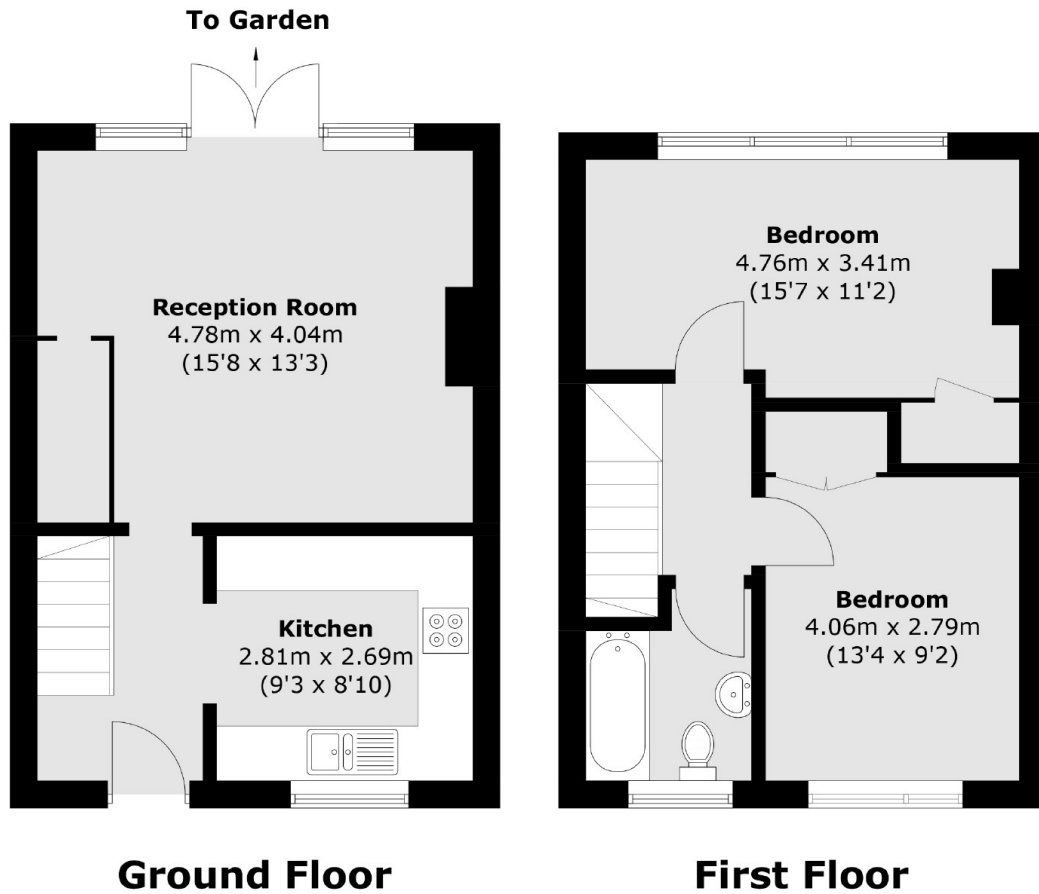
A well presented two double bedroom purpose-built maisonette with a private rear garden. Well positioned for the amenities of Brockley, Lewisham and Ladywell Village.

Shell road is a residential road located close to Ladywell Village and fantastic local amenities. Lewisham and Brockley stations are nearby with Hilly Fields and Brookmill park also in close proximity.

Features

- Well Presented
- Maisonette
- Two Double Bedrooms
- Private Rear Garden
- Good Size Reception Room
- Close To Transport

Shell Road,
London, SE13



Total area (approx.): 66.0 sq. m (710.3 sq. ft)