



## Tressillian Crescent, SE4

£650,000

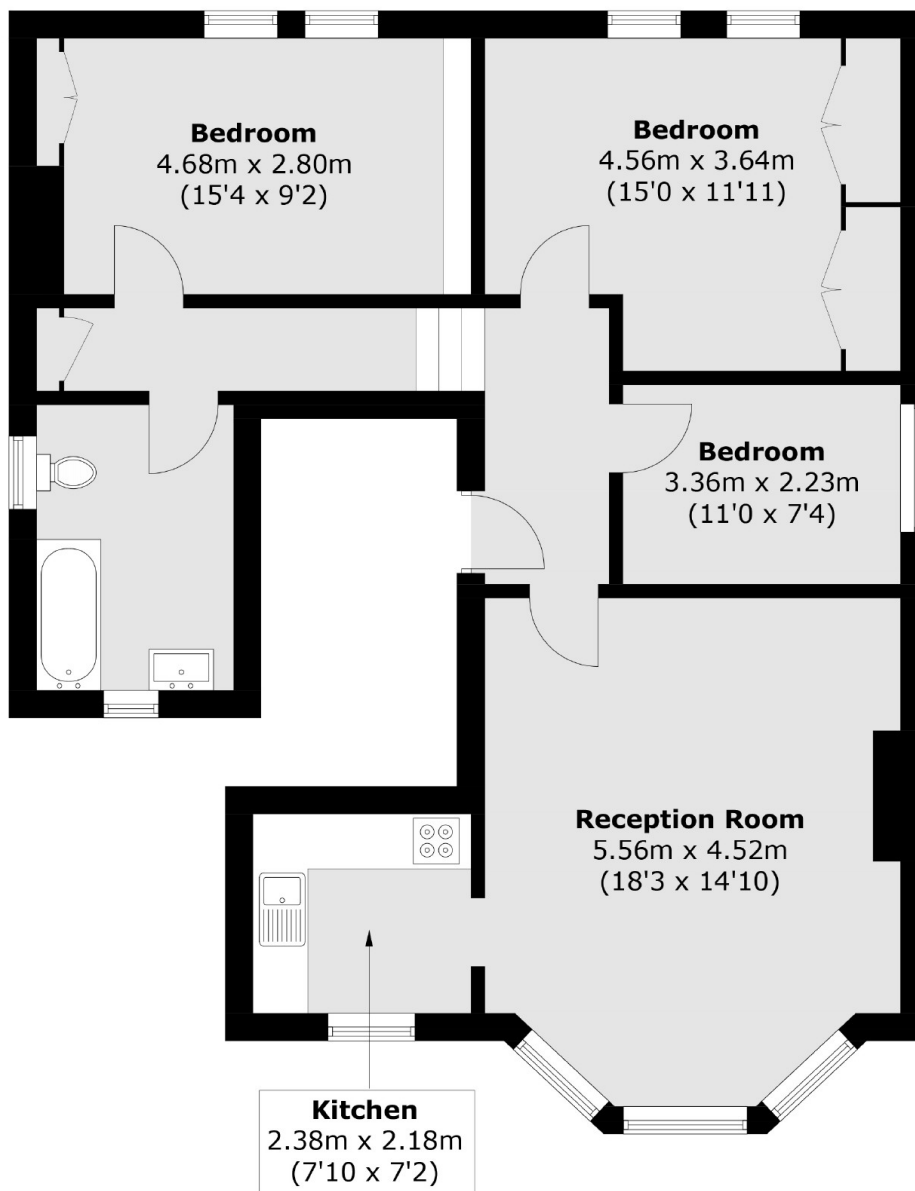
A characterful share of freehold flat positioned on the first floor of an imposing detached Victorian house. Across 889 Sq Ft there is a large bay-fronted reception room with high ceilings, three generous double bedrooms served by a three piece bathroom suite and offered with no onward chain.

Tressillian Crescent is a highly sought after road in the Brockley Conservation area with excellent transport links from Brockley, St. Johns and Ladywell train stations.

### Features

Three Bedrooms  
Large Reception  
Great Transport  
Brockley Conservation  
Private Section Of Garden  
889 Sq Ft

# Tressillian Crescent, London, SE4



First Floor

Total area (approx.): 82.6 sq. m (889.1 sq. ft)