



Cumberland Place, SE6

£189,000

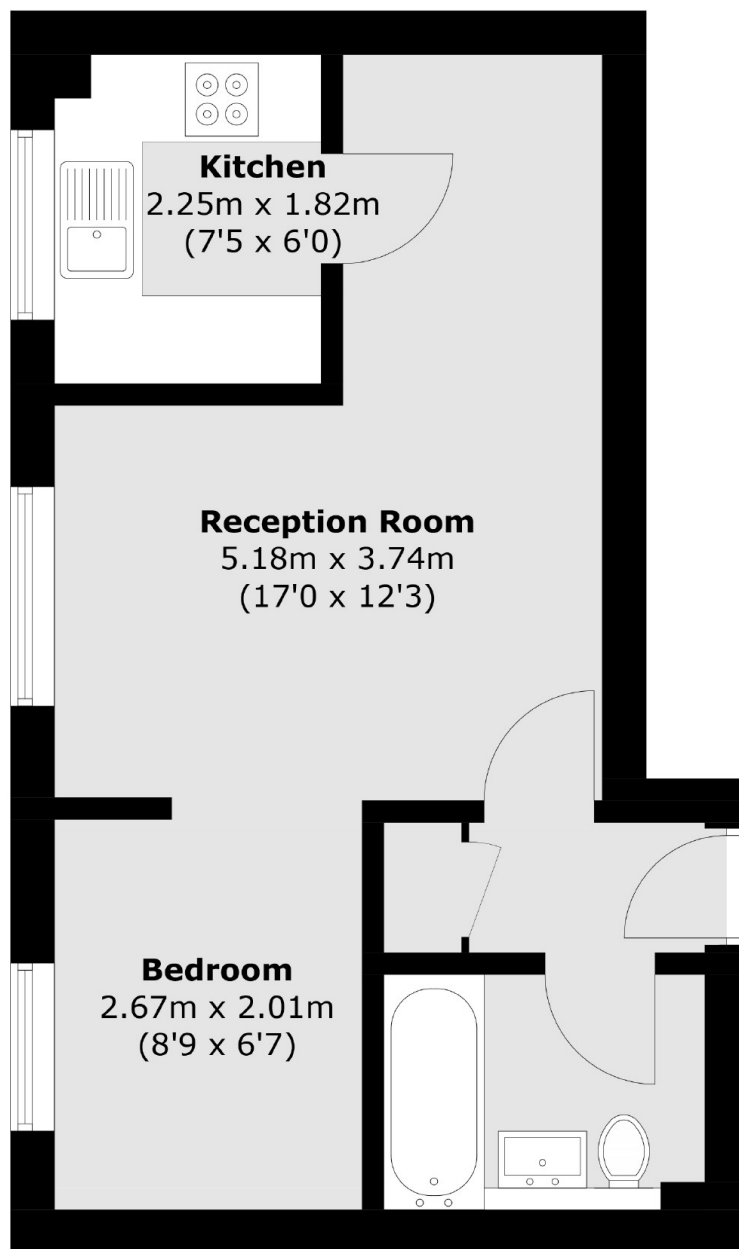
A well presented and thoughtfully laid out first floor studio apartment. Located in a quiet development amongst well maintained gardens and coming with it's own allocated parking space, this flat makes an ideal purchase for both first time buyers and buy to let investors.

Cumberland Place is located within easy reach of Hither Green station which has regular services into London and the city.

Features

- Chain Free
- Quiet Development
- Long Lease
- Well Presented
- Allocated Parking
- All Fixtures & Fittings Included

Cumberland Place, London, SE6



First Floor

Total area (approx.): 31.5 sq. m (339.1 sq. ft)