



Darfield Road, SE4

£875,000

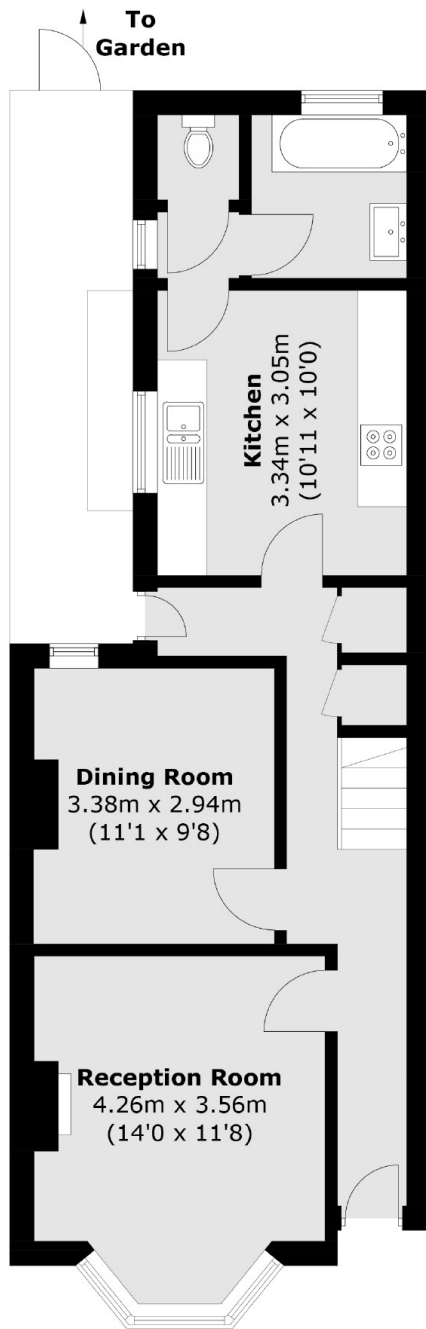
A delightful Victorian house offering over 1,140 Sq Ft of versatile living space. Well positioned for the amenities of Crofton Park and Brockley, there is potential to extend on the ground floor and into the loft space subject to the usual consents to create a beautiful family home.

Darfield Road is a pretty, tree lined Victorian road conveniently positioned for Crofton Park, Brockley and Ladywell train stations and the open spaces of Hilly Fields and Blythe Hill and Brockwell and Ladywell Cemetery. The great independent cafés and shops of Crofton Park are located at the top of the road. There are also plenty of options for Ofsted 'Outstanding' schools in the local area.

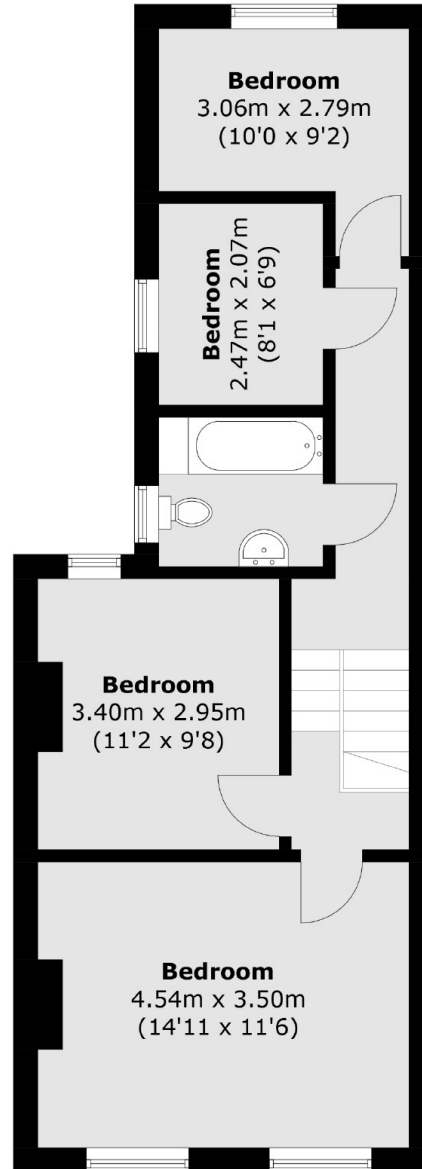
Features

- Victorian House
- Four Bedrooms
- Two Bathrooms
- Over 1,140 Sq Ft
- Convenient For Transport
- Freehold

Darfield Road, London, SE4



Ground Floor



First Floor

Total area (approx.): 106.0 sq. m (1,140.9 sq. ft)