



George Lane, SE13

£385,000

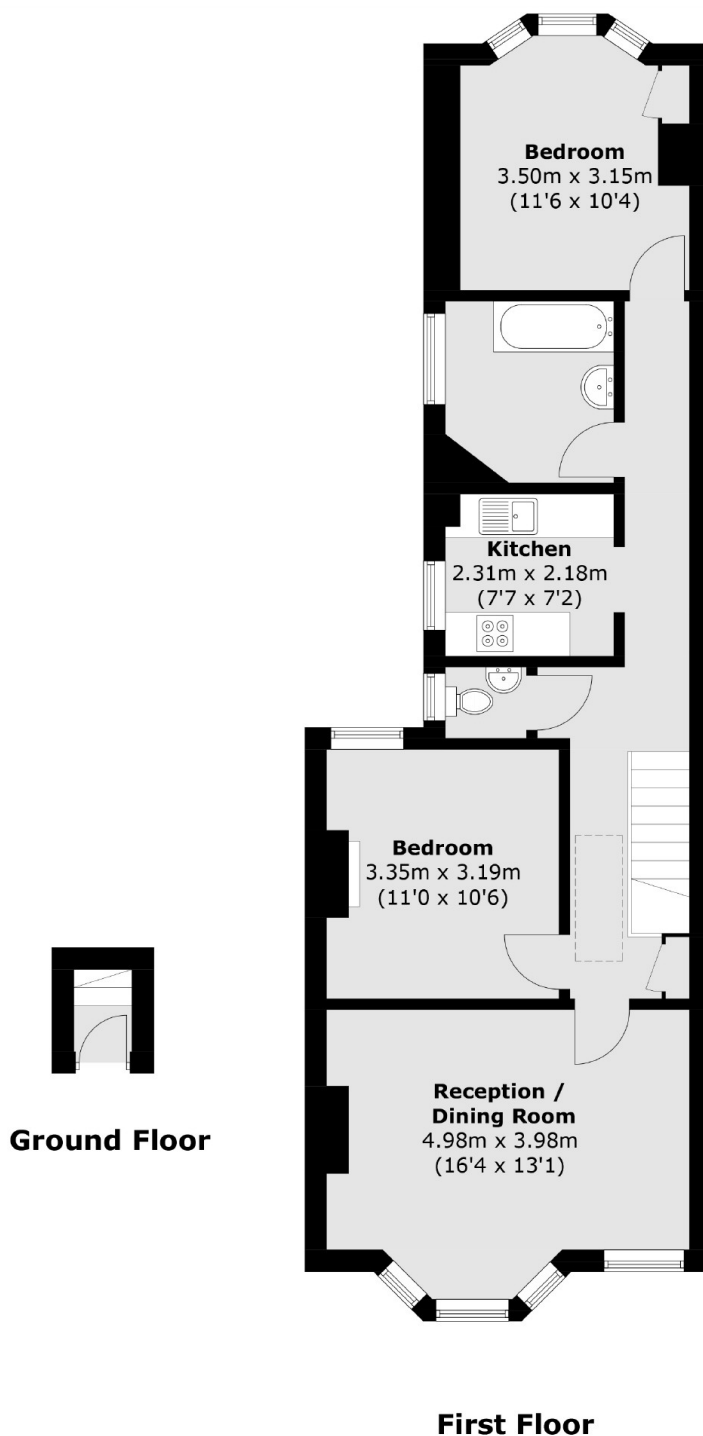
This two double bedroom period conversion is beautifully presented throughout. The property has a large bright living room, separate kitchen and large bathroom, is favourable positioned moments from Mountsfield Park and is offered with a freehold share and no onward chain.

George Lane is a quiet residential road equidistant from Hither Green, Ladywell and Catford stations with frequent service into London and the City.

Features

- Two Bedrooms
- Large Reception Room
- Well Presented
- Share Of Freehold
- Close To Stations
- Chain Free

George Lane, London, SE13



Total area (approx.): 67.9 sq. m (730.8 sq. ft)