



## Ivy Road, SE4

£280,000

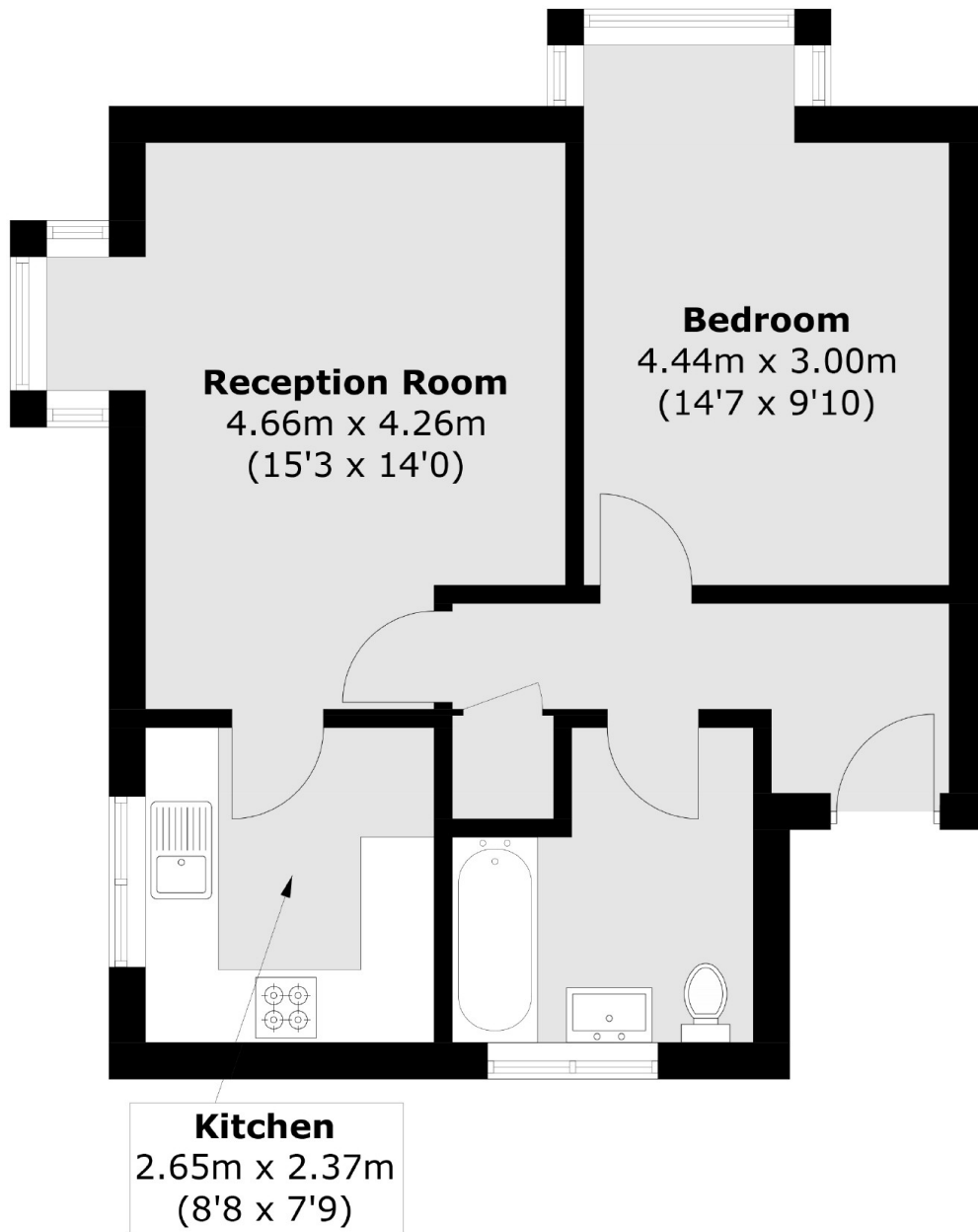
A double bedroom ground floor flat forming part of a well-maintained apartment block with shared grounds. Well positioned for Hilly Fields and Ladywell station. There is allocated parking, freehold share and no onward chain.

Ladywell station is a short walk away and provides fast and frequent services into central London. In addition, Lewisham DLR is just a stop away for easy access to Canary Wharf. Crofton Park station is also within easy reach for links into Blackfriars and St Pancras.

### Features

- Double Bedroom
- Allocated Parking
- Well Maintained Block
- Close To Station
- Share Of Freehold
- Chain Free

# Ivy Road, London, SE4



Total area (approx.): 47.9 sq. m (515.6 sq. ft)