



Ladywell Road, SE13

£535,000

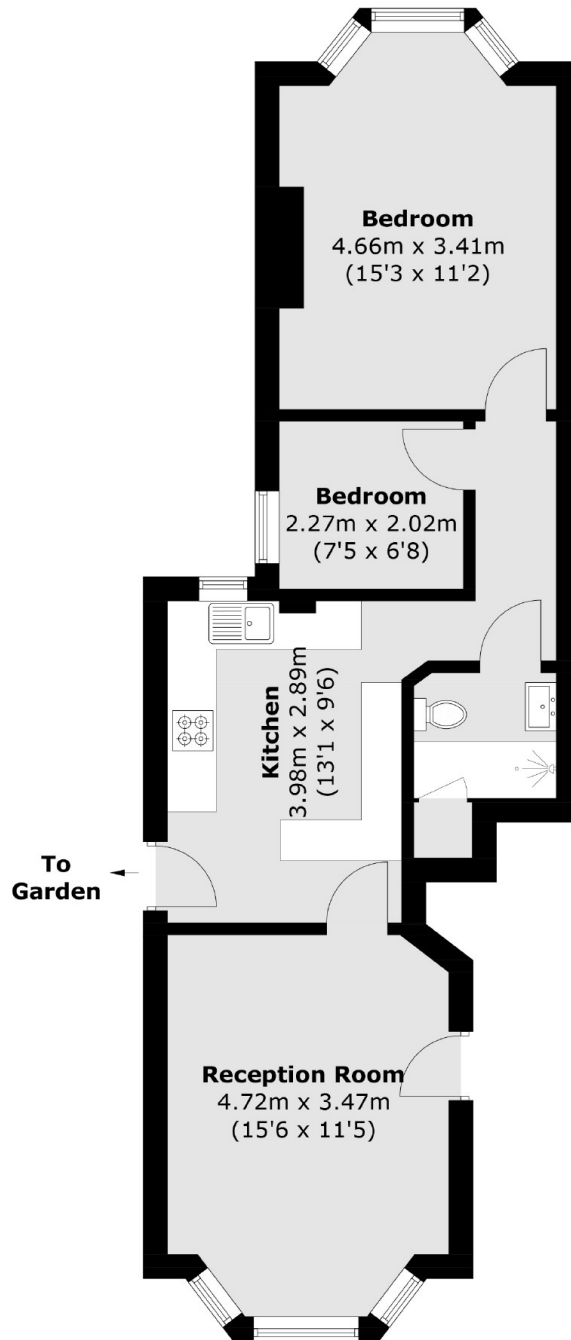
Tastefully refurbished, two bedroom garden flat occupying the ground floor of a beautiful Victorian terrace.

Ladywell Road is a popular road close to the open space of Hilly Fields Park and the amenities of Ladywell Village. Ladywell, Lewisham, Cofton Park and Brockley train stations offer excellent links into the city.

Features

- Stunning Victorian Facade
- Large Private Garden
- Ladywell Village
- Close To Transport
- Long Lease
- Outstanding Local Schools

Ladywell Road, London, SE13



Total area (approx.): 55.6 sq. m (598.5 sq. ft)