



## Tressillian Road, SE4

£525,000

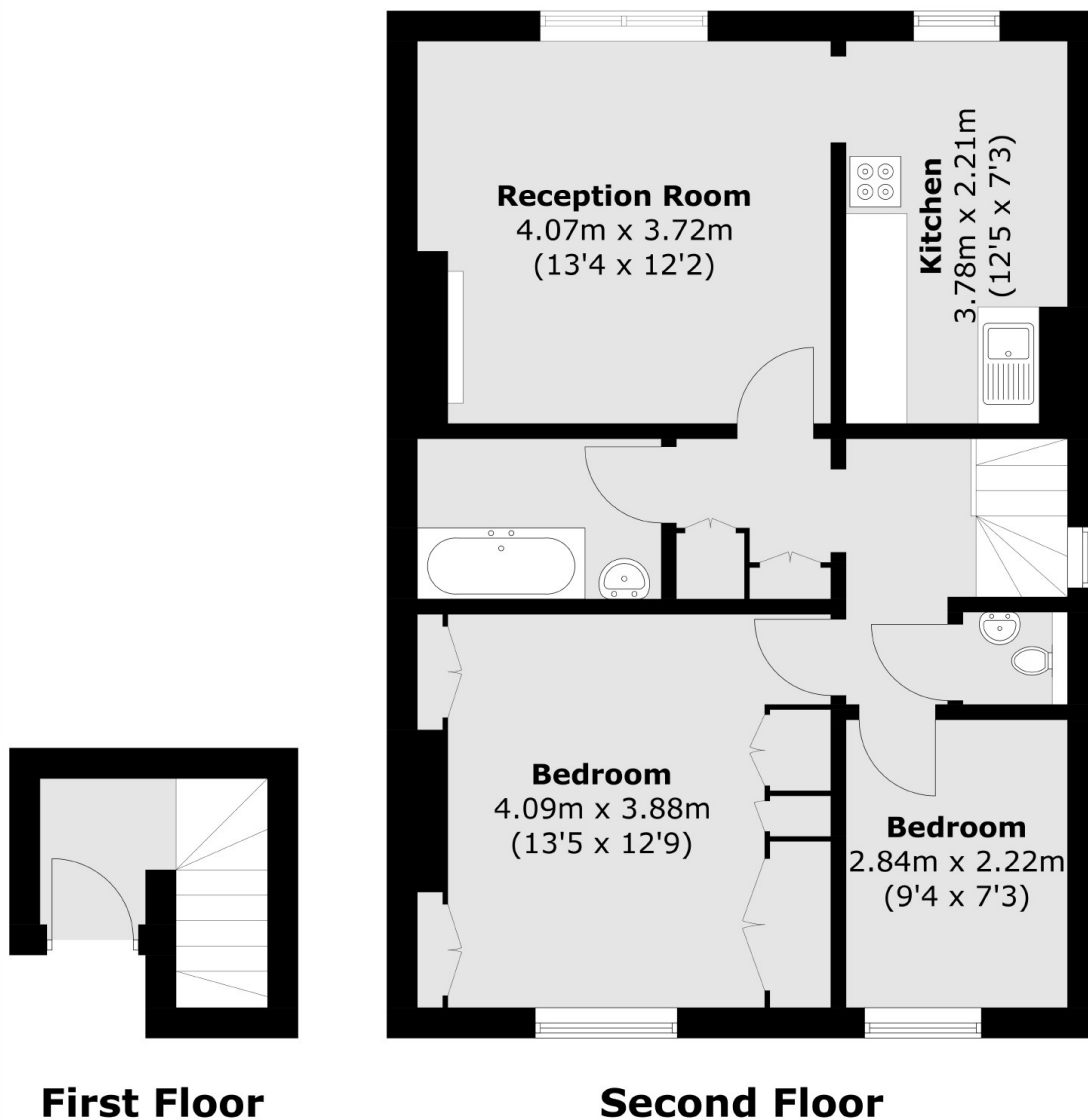
Beautifully finished and well laid out is this two bedroom flat, set on the top floor of an imposing Victorian house on the highly desirable Tressillian Road.

Tressillian Road is a sought after road in the Brockley Conservation area with excellent transport links from Brockley, St. John's and Ladywell train stations.

### Features

- Highly Desirable Road
- Two Double Bedrooms
- Beautiful Victorian Facade
- Close To Transport
- Hilly Fields Park
- Lovely Interior Condition

# Tressillian Road, London, SE4



Total area (approx.): 65.1 sq. m (700.7 sq. ft)