



Henryson Road, SE4

£850,000

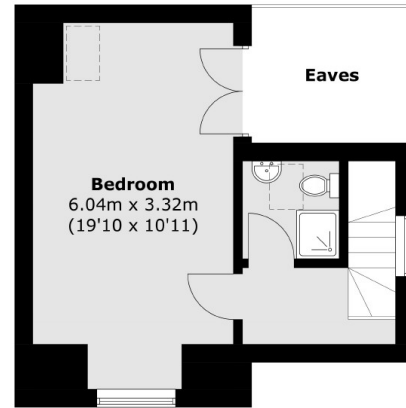
A sought after semi-detached Heath Estate house with a large west facing garden and off street parking. Offering four double bedrooms, separate reception and dining rooms, there is potential to create a wonderful family home.

Henryson Road is a quiet residential street perfectly positioned for Crofton Park and Ladywell Stations, the open spaces of Hilly Fields and the ever popular Gordonbrock Primary School. There are numerous cafés, restaurants and bars all within easy reach.

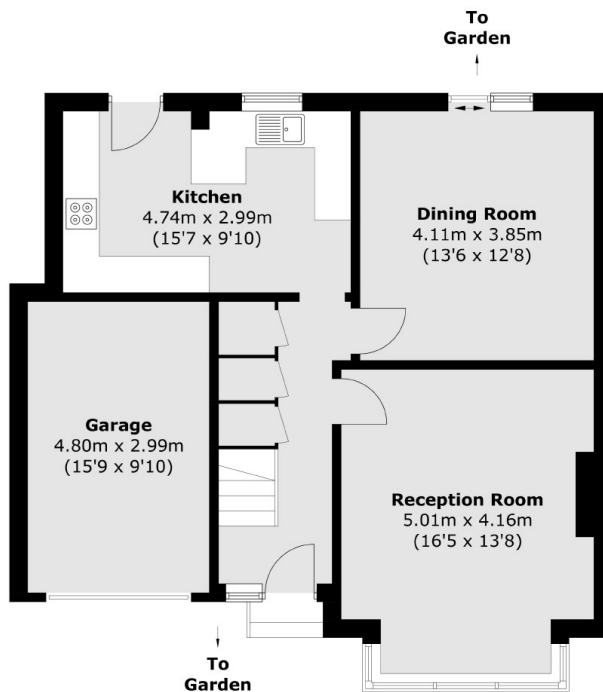
Features

- Semi Detached House
- Four Bedrooms
- Two Bathrooms
- Potential To Extend
- Off Street Parking
- Large West Facing Garden

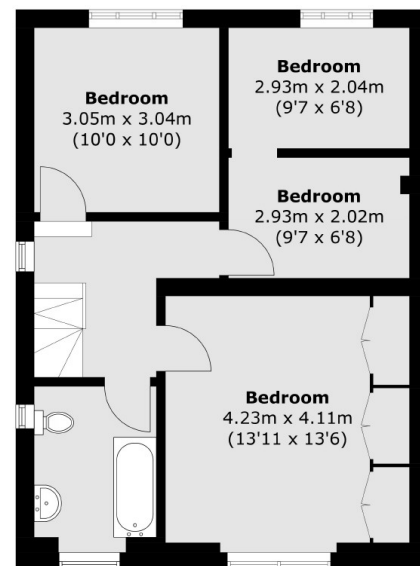
Henryson Road, London, SE4



Second Floor



Ground Floor



First Floor

Total area (approx.): 142.7 sq. m (1,536.0 sq. ft)
Garage (approx.): 14.3 sq. m (153.9 sq. ft)
(Excluding Eaves)