



Tyrwhitt Road, SE4

£625,000

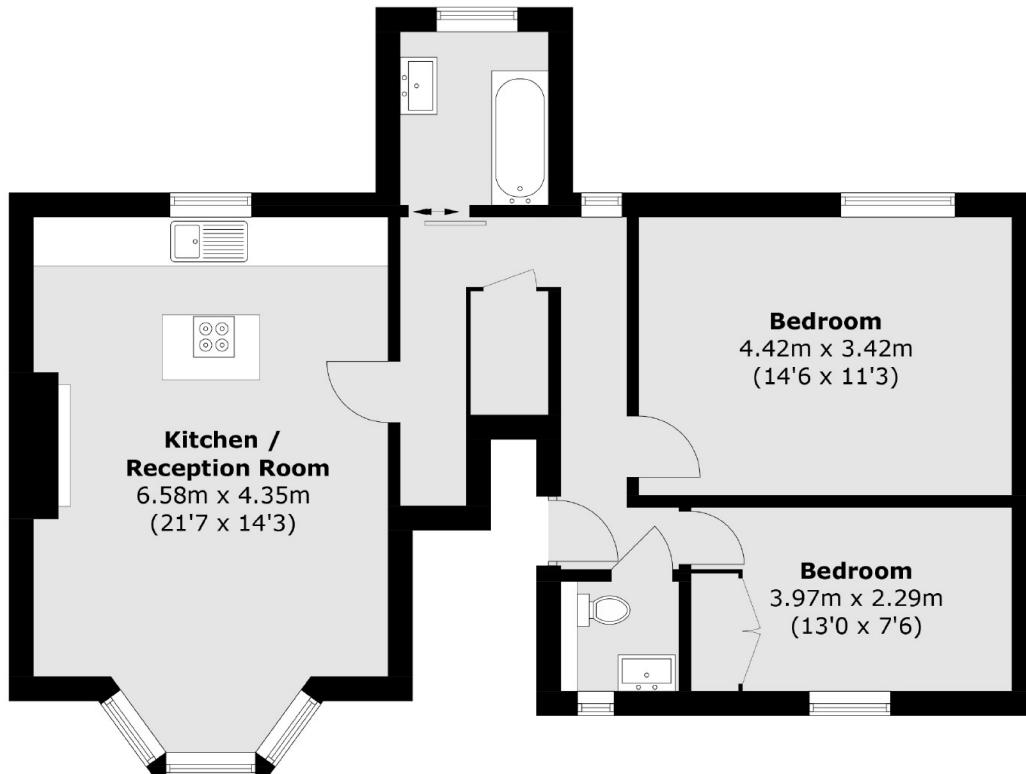
A very bright and spacious newly renovated Victorian conversion flat situated on a sought after residential road in the Brockley Conservation area. Two double bedrooms with a contemporary finish throughout, there is a large shared garden and sold with no onward chain.

Tyrwhitt Road is a highly sought after road in the Brockley Conservation area with excellent transport links from Brockley, St. John's and Ladywell train stations.

Features

- Two Bedrooms
- Large Reception/Kitchen
- Brockley Conservation
- Long Lease
- Shared Garden
- Chain Free

Tyrwhitt Road,
London, SE4



Total area (approx.): 69.0 sq. m (742.7 sq. ft)